



**User's Manual**

2801230

## Package List

2801230 package includes the following items:

- z 1x 2801230 single board computer
- z 1x IDE cable
- z 1x SATA Power cable
- z 2x SATA cable
- z 1x I/O Shielding
- z 1 x mini jumper pack
- z 1 x Utility CD
- z 1 x QIG (quick installation guide)

## Specifications

- z CPU:LGA 755 intel® Pentium® D/4DCeleron® D with 533/800/1066MHz FSB
- z System Chipset:intel® 945G+ICH7
- z BIOS:AMI BIOS Label
- z System memory:2x240-pin Dual channl DDRII400/533/667 Mhz up to 2GB
- z Ethernet: Dual Broadcom BCM5787 PCI-E GbE with ASF2.0 remote control support
- z I/O
  - 8 x USB 2.0
  - 4 x SATAII-300
  - 1 x IDE
  - 3 x RS-232
  - 1 x RS-232/422/485
  - 2 x PS/2 for KB/MS
  - 1 x 20-pin LPC(TPM Module)
- z Expansion
  - 1xPCI-Ex16(Support PCI-Ex1/2/4/8/16 PCI-E add on cards)
  - 1xMini PCI
- z IrDA :1xIrDA by pin header
- z Super I/O: ITE8712
- z Digital I/O:8 bit digital I/O,4 input/ 4 output by super I/O
- z Audio: Realtek ALC655 with AC'97 codec
- z Display: Analog CRT integrated in Intel 945G
- z WDT: Software programmable 1-255 sec. by super I/O
- z Power supply: ATX support
- z Power Consumption
  - 5V@1.8A, +12V@5.81A, +3.3V@3.49A,5VSB@0.37A
  - (Pentium 4 3.06GHz,DDR2 533MHz 1GB\*1)—3D MARK
- z Temperature:Operation:0~60°C(32~140°F)
- z Humidity: Operation:5%~95% non-condensing
- z Dimension:170mmx170mm
- z Weight:GW:1100g;NW:400g

## Ordering Information

- z 2801230  
Mini ITX Motherboard with intel Pentium D 1066MHz Processor,  
Dual PCI-E GbE,SATAII and Audio
- z PVGA-M1600L:ATI M56P mobile grade PCI Express Graphic Card  
with VGA,DVI, 1080i HDTV and dual channel 24-bit LVDS interface.
- z 32200-000077-RS: RS-232/422/485 Cable
- z CB-USB02-RS:USB Cable
- z CF-520-RS: CPU Cooler
- z CF-775A-RS: CPU Cooler

## Jumpers setting and Connectors

JP5: Clear CMOS Setup	
JP5(1-2)	DESCRIPTION
Open	Keep CMOS Setup (Normal Operation)
Short	Clear CMOS Setup

IR1: IrDA connector	
PIN	DESCRIPTION
1	VCC
2	NC
3	IR-RX
4	Ground
5	IR-TX

JP2: RS-232/422-485 Select for COM3	
PIN	DESCRIPTION
1-2	RS232(Default)
2-3	RS422/485

COM3: Serial Port Connector			
PIN	DESCRIPTION	PIN	DESCRIPTION
1	DCD	2	DSR
3	RXD	4	RTS
5	TXD	6	CTS
7	DTR	8	RI
9	GROUND	10	NC
11	TX+	12	TX-
13	RX+	14	RX-

SYSFAN1 : SYSTEM Fan Connector	
PIN	DESCRIPTION
1	Ground
2	+12V
3	Rotation Signal

<b>CPUFAN1 : CPU Fan Connector</b>	
<b>PIN</b>	<b>DESCRIPTION</b>
1	Ground
2	+12V
3	Rotation Signal
4	Control

<b>USB1, USB2: 2 ports USB Connector</b>			
<b>PIN</b>	<b>DESCRIPTION</b>	<b>PIN</b>	<b>DESCRIPTION</b>
1	USB Power	5	GROUND
2	DATA2-	6	DATA3+
3	DATA2+	7	DATA3-
4	GROUND	8	USB Power

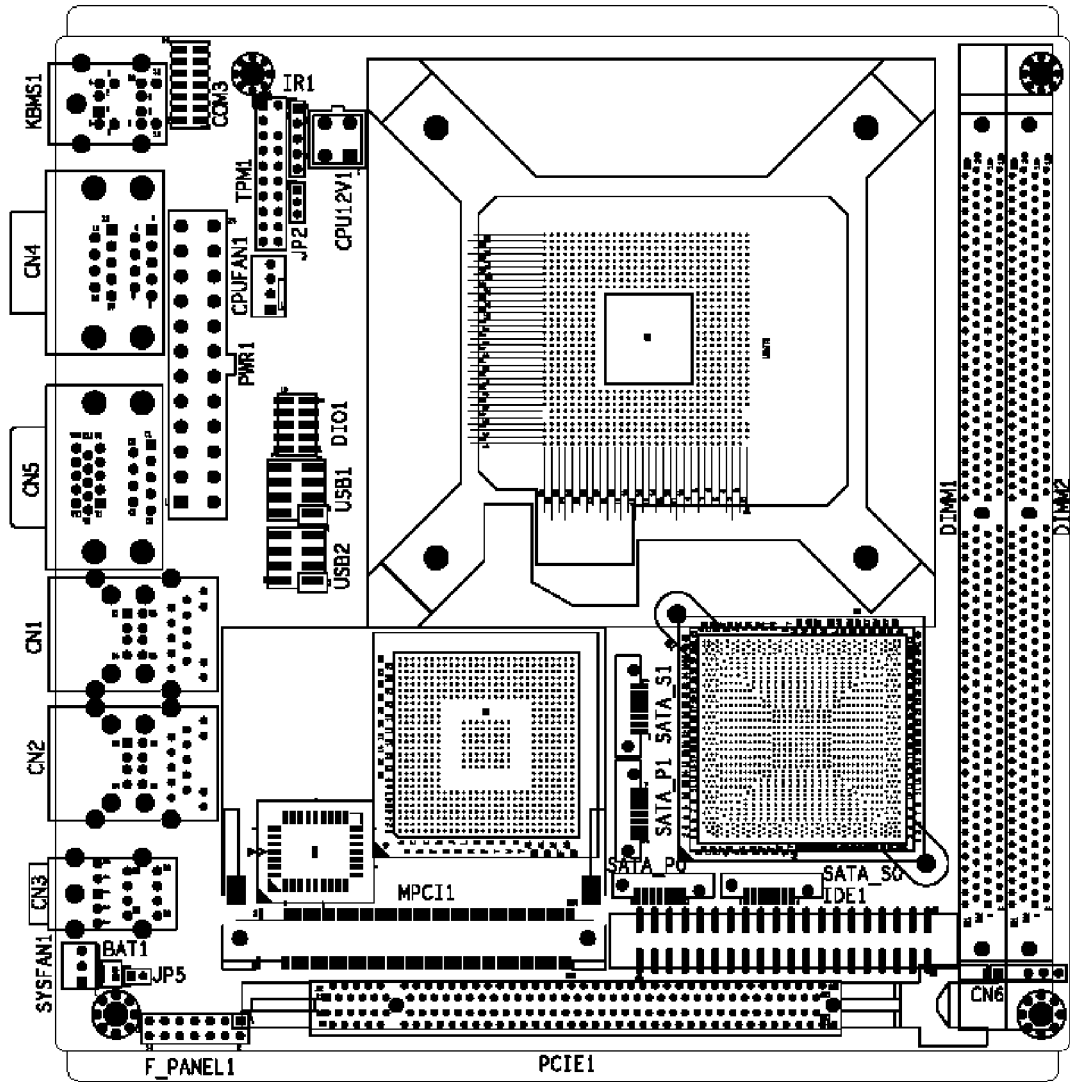
<b>F_PANEL1: Front Panel connector</b>		
<b>FUNCTION</b>	<b>PIN</b>	<b>DESCRIPTION</b>
BUZZER	2	VCC
	4	NC
	6	NC
	8	BUZZER-
RESET	12	RESET
	14	GROUND
HDD LED	11	IDE_LED+
	13	IDE_LED-
POWER LED	1	LED+
	3	LED-(GROUND)
POWER BUTTON	7	POWER BUTTON-
	9	POWER BUTTON+

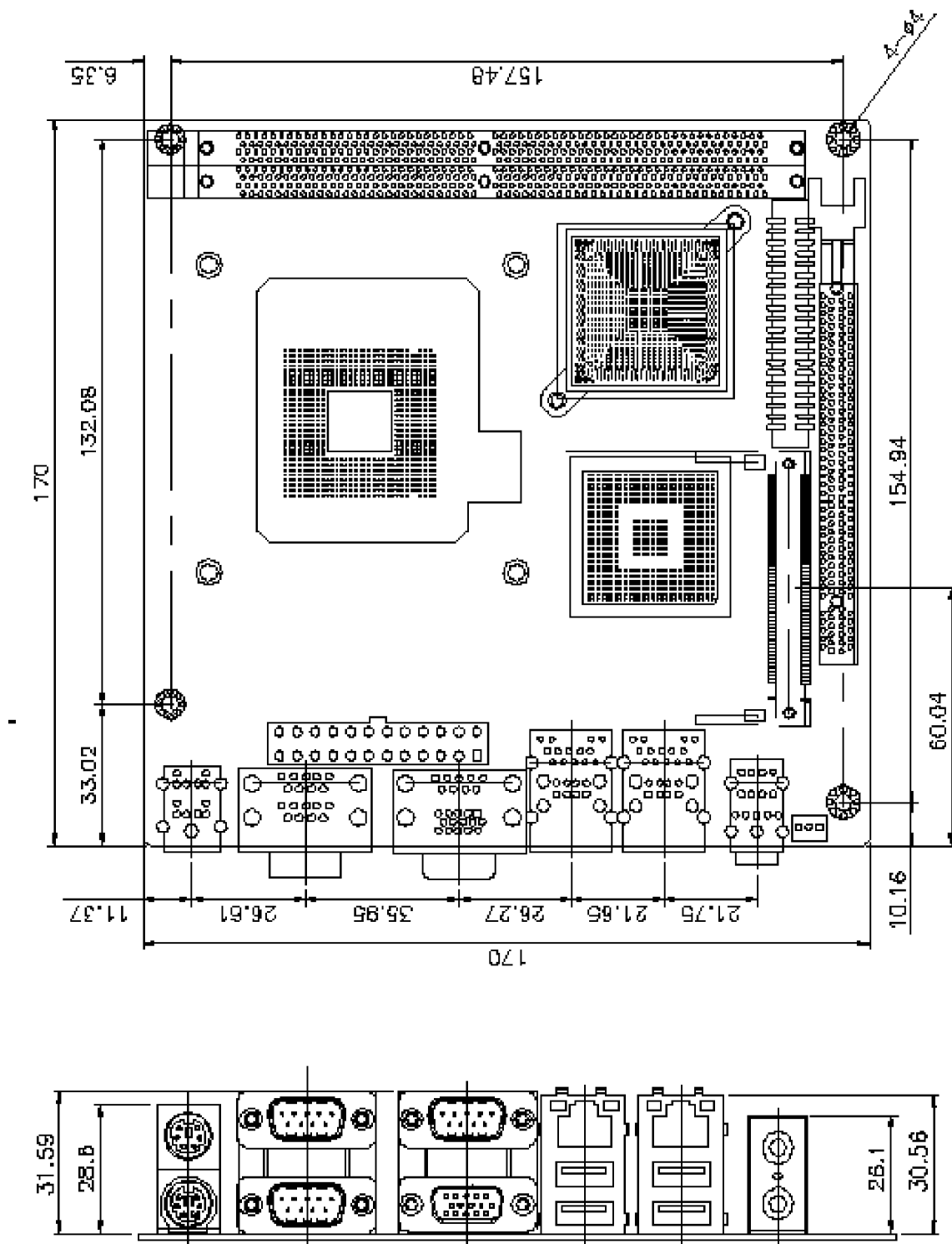
<b>CPU12V1: ATX +12V Power connector</b>	
<b>PIN</b>	<b>Description</b>
1	GROUND
2	GROUND
3	+12V
4	+12V

<b>TPM1: TPM connector</b>			
<b>PIN</b>	<b>DESCRIPTION</b>	<b>PIN</b>	<b>DESCRIPTION</b>
1	Clock	2	GND
3	Frame#	4	KEY
5	Reset#	6	+5V
7	LAD3	8	LAD2
9	+3.3V	10	LAD1
11	LAD0	12	GND
13	SCL	14	SDA
15	+3.3V SBY	16	Serial IRQ
17	GND	18	NC
19	Power Down#	20	DRQ#

<b>DIO1: Digital I/O connector</b>			
<b>PIN</b>	<b>DESCRIPTION</b>	<b>PIN</b>	<b>DESCRIPTION</b>
1	GROUND	2	VCC
3	DGPI0	4	DGPO0
5	DGPI1	6	DGPO1
7	DGPI2	8	DGPO2
9	DGPI3	10	DGPO3

# Board Layout: Jumper and Connector Locations







Any advice or comments about our products and service, or anything we can help you with please don't hesitate to contact with us. We will do our best to support you for your products, projects and business

### **Global American Inc.**

Address: 17 Hampshire Drive  
Hudson, NH 03051

TEL: Toll Free (U.S. Only) 800-833-8999  
(603)886-3900

FAX: (603)886-4545

Website: <http://www.globalamericaninc.com>

E-Mail: [salesinfo@globalamericaninc.com](mailto:salesinfo@globalamericaninc.com)

