



User's Manual

3002720/3007131/3003860

3002720

10/100 Mbps Realtek 8139C Ethernet Module



Chipset

Realtek RTL8139C

Protocol / Performance

10 Mbps and 100 Mbps, auto-negotiation
Supports Full Duplex Flow Control

Boot ROM support

up to 128KB Flash Memory Boot-ROM

Indicator LEDs

2 LED on RJ-45 connector - Activity/Link
and 100 Mbps indicator additional 4-pin
header
for external LEDs

Connectors

RJ-45 interface connector
10-pin box-header for extension cable
with RJ-45 connector with LED
3-pin wake up LAN control line

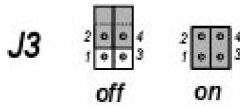
JUMPER SETTINGS

Power Saving and Wake-up LAN

Advanced power saving mode when LAN function or wakeup function is not used, supports Link Change, Microsoft "Wake-up Frame" and AMD "Magic Packet" for WOL function.

J1 Jumper: on/off. (Default is off to disable 3.3V standby voltage)

J3 Jumper: on/off. (Default is off to disable 3.3V standby voltage)



	J1	J2	J3
Enable	on	off	1-2, 3-4
Disable	off	off	all, off
(Default is disable)			

WOL1 pin assignments are: (connect to system that support 3 pin WOL header)

- pin#1 : 5V
- pin#2 : Ground
- pin#3 : LAN_WAKE

U11 Rotated switch is the PCI ID selector. The range from 0 to 3.

J4 is standard RJ45 pin assignments

J5 is 12 pin 90 degree box head, the pin assignments are:

- pin #1 : speed LED- Pin#2 : speed LED+
- #3 : GND #4 : TX+
- #5 :TX- #6 : RX+
- #7 : NC #8 : RX-
- #9 : NC #10: GND
- #11: ACT LED- #12: ACTLED+

3007131

10/100 Mbps Intel 82559 Ethernet Module



Chipset
Intel 82559

Protocol / Performance
10 Mbps and 100 Mbps, auto-negotiation
Supports Full Duplex Flow Control

Boot ROM support
up to 128KB Flash Memory Boot-ROM

Indicator LEDs
2 LED on RJ-45 connector - Activity/Link
and 100 Mbps indicator additional 4-pin
header
for external LEDs

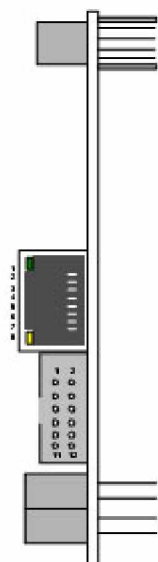
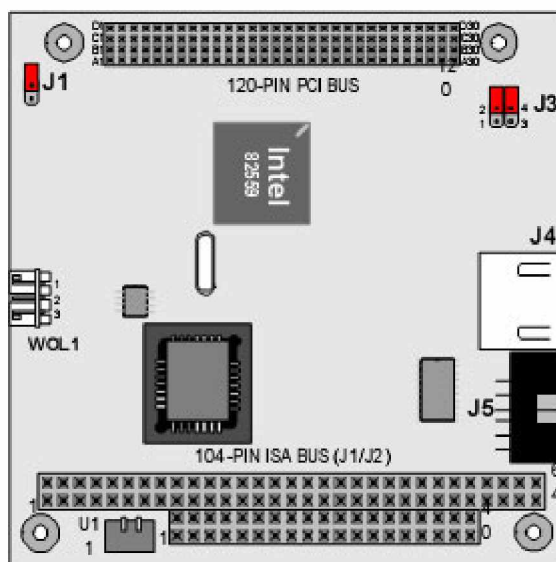
Connectors
RJ-45 interface connector
10-pin box-header for extension cable
with RJ-45 connector with LED
3-pin wake up LAN control line

Power Saving and Wake-up LAN
Advanced power saving mode when LAN
function or wakeup function is not used,
supports Link Change, Microsoft "Wake-up
Frame" and AMD "Magic Packet" for WOL
function.

OS Support
Microsoft Windows NT4.0, Microsoft
Windows* 95, 98, 2000, CE, Novel
NetWare* 3.11, 3.12 & 4.1x, 5 Server,
Packet driver for UNIX Client, UnixWare
7.0, Linux, SCO Unix, MAC, QNX, Free
BSD, Macintosh Mac OS 8.x/9.x

Pressfit PC/104 Connectors
High quality pressfit connectors for ISA and
PCI bus to guarantee optimal connection and
fit

Power Requirement
0.52 W (105 mA @ +5 V) fully functional



J1,J2,J3: Wake On Lan, 3.3V Standby voltage Jumpers. (Default setting is disable)

WOL1: 3 pin for Wake On Lan 5V standby wire connection.

J4 : RJ45 LAN connector.

J5 : 10 pin box head for extension LAN connector.

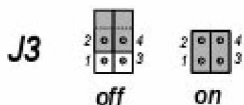
U11 : 8 positions rotated switch for PCI ID selection. The range from 0 to 3.

JUMPER SETTINGS

Power Saving and Wake-up LAN

Advanced power saving mode when LAN function or wake-up function is not used, supports Link Change, Microsoft "Wake-up Frame" and AMD "Magic Packet" for WOL function.

(Default is off to disable 3.3V standby voltage)



	J1	J2	J3
Enable	on	off	1-2, 3-4
Disable	off	off	all, off
(Default is disable)			

WOL1 pin assignments are:

pin#1 : 5V

pin#2 : Ground

pin#3 : LAN_WAKE

U11 Rotated switch is the PCI ID selector. The range from 0 to 3.

J4 is standard RJ45 pin assignments

J5 is 10 pin 90 degree box head, the pin assignments are:

pin #1 : speed LED-

Pin#2 : speed LED+

#3 : GND

#4 : TX+

#5 :TX-

#6 : RX+

#7 : NC

#8 : RX-

#9 : NC

#10: GND

#11: ACT LED-

#12: ACTLED+

3003860

Triple port Intel 82559 Ethernet Module



Chipset

3x Intel 82559

Protocol / Performance

10 Mbps and 100 Mbps, auto-negotiation
Supports Full Duplex Flow Control

Boot ROM support

up to 128KB Flash Memory Boot-ROM

Indicator LEDs

2 LED on RJ-45 connector - Activity/Link
and 100 Mbps indicator additional 4-pin
header
for external LEDs

Connectors

RJ-45 interface connector
10-pin box-header for extension cable
with RJ-45 connector with LED
3-pin wake up LAN control line

Power Saving and Wake-up LAN

Advanced power saving mode when LAN
function or wakeup function is not used,
supports Link Change, Microsoft "Wake-up
Frame" and AMD "Magic Packet" for WOL
function.

OS Support

Microsoft Windows NT4.0, Microsoft
Windows* 95, 98, 2000, CE, Novel
NetWare* 3.11, 3.12 & 4.1x, 5 Server,
Packet driver for UNIX Client, UnixWare
7.0, Linux, SCO Unix, MAC, QNX, Free
BSD, Macintosh Mac OS 8.x/9.x

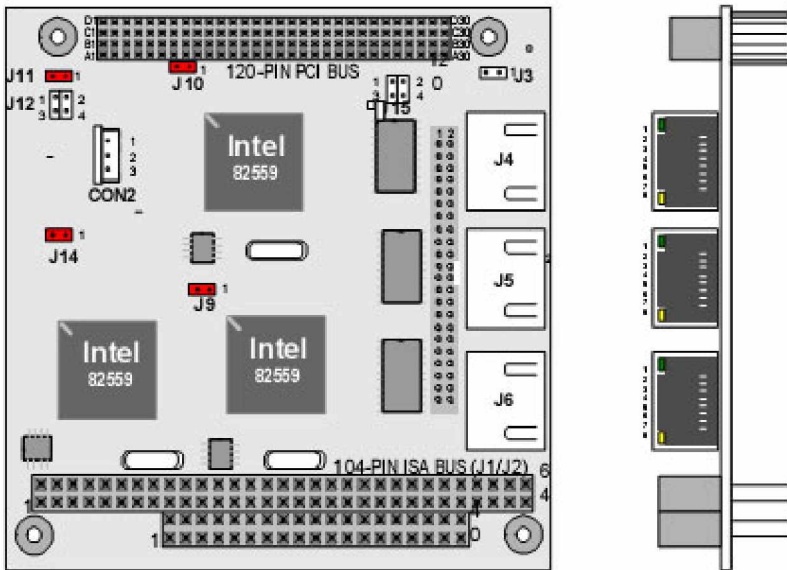
Pressfit PC/104 Connectors

High quality pressfit connectors for ISA and
PCI bus to guarantee optimal connection and
fit

Power Requirement

0.52 W (105 mA @ +5 V) fully functional

BOARD LAYOUT OF 3003860



J15, J3, J12, J11: Wake On Lan, 3.3V Standby voltage Jumpers. (Default setting is disable)

CON2: 3 pin for Wake On Lan 5V standby wire connection.

J4, J5, J6 : RJ45 LAN connector.

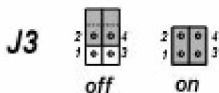
CON1 : 40 pin box head for extension LAN connector.

JUMPER SETTINGS

Power Saving and Wake-up LAN

Advanced power saving mode when LAN function or wakeup function is not used, supports Link Change, Microsoft "Wake-up Frame" and AMD "Magic Packet" for WOL function.

(Default is off to disable 3.3V standby voltage)



	J11	J3	J15	J12
Enable	off	off	all off	all off
Disable	on	on	1-3 2-4	1-2 3-4

CON2: pin assignments are:

pin#1 : 5V

pin#2 : Ground

pin#3 : LAN_WAKE

J4, J5, J6: is standard RJ45 pin assignments

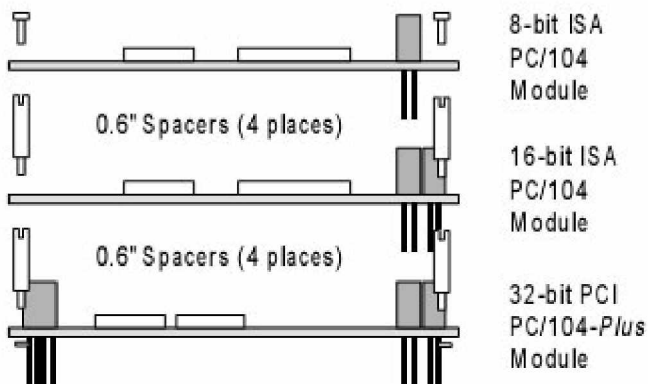
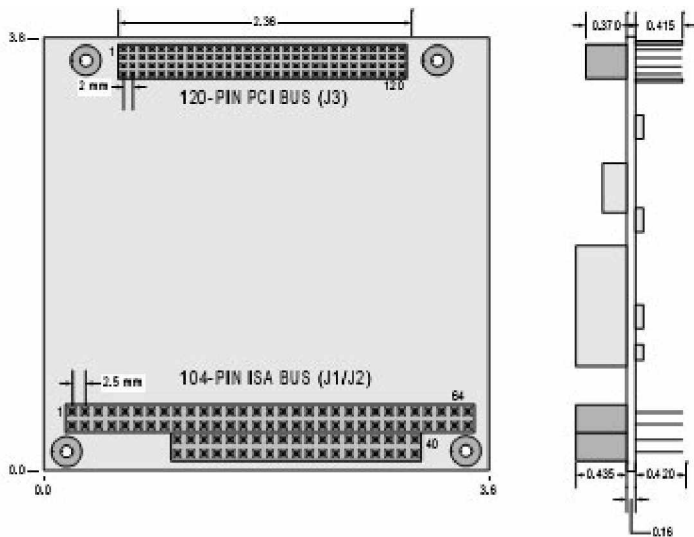
	LAN1 (J4)	LAN2 (J5)	LAN3 (J6)
	J10	J14	J9
Enable	on	on	on
Disable	off	off	off

JUMPER SETTINGS

J5 is 40 pin 90 degree box head, the pin assignments are:

pin #1: Speed LED-	pin #2: Speed LED+
#3: GND	#4: TX1+
#5: TX1-	#6: RX1+
#7: NC	#8: RX1 -
#9: NC	#10: GND
#11: ACT LED -	#12: ACT LED +
#13: GND	#14: GND
#15: Speed LED2 -	#16: Speed LED 2 +
#17: GND	#18: TX2 +
#19: TX2 -	#20: RX2 +
#21: NC	#22: RX2 -
#23: NC	#24: GND
#25: ACT LED2 -	#26: ACT LED2 +
#27: GND	#28: GND
#29: Speed LED -	#30: Speed LED3 +
#31: GND	#32: TX3 +
#33: TX3 -	#34: RX3 +
#35: NC	#36: RX3 -
#37: NC	#38: GND
#39: ACT LED3 -	#40: ACT LED3 +

PC/104-PLUS GENERAL DIMENSIONS

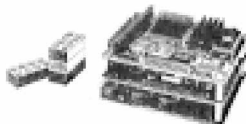
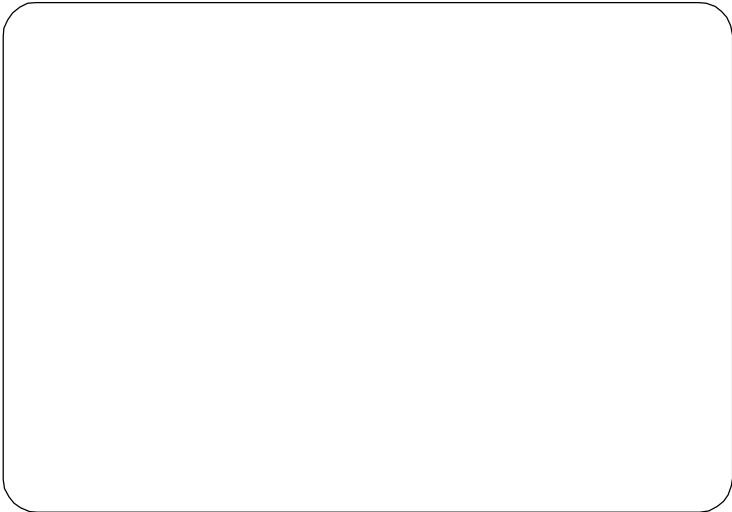


WARRANTY

This product is warranted to be in good working order for a period of one year from the date of purchase. Should this product fail to be in good working order at any time during this period, we will, at our option, replace or repair it at no additional charge except as set forth in the following terms. This warranty does not apply to products damaged by misuse, modifications, accident or disaster.

Vendor assumes no liability for any damages, lost profits, lost savings or any other incidental or consequential damage resulting from the use, misuse of, or inability to use this product. Vendor will not be liable for any claim made by any other related party.

Return authorization must be obtained from the vendor before returned merchandise will be accepted. Authorization can be obtained by calling or faxing the vendor and requesting a Return Merchandise Authorization (RMA) number. Returned goods should always be accompanied by a clear problem description.



Any advice or comments about our products and service, or anything we can help you with please don't hesitate to contact with us. We will do our best to support you for your products, projects and business

Global American Inc.

Address: 17 Hampshire Drive
Hudson, NH 03051

TEL: Toll Free (U.S. Only) 800-833-8999
(603)886-3900

FAX: (603)886-4545

Website: <http://www.globalamericaninc.com>

E-Mail: salesinfo@globalamericaninc.com

