



Quick Installation Guide

3302130

Version 1.0

3302130 Quick Installation Guide

Copyrights

This manual is copyrighted and all rights are reserved. It does not allow any non authorization in copied, photocopied, translated or reproduced to any electronic or machine readable form in whole or in part without prior written consent from the manufacturer.

In ~~general~~, the manufacturer will not be liable for any direct, indirect, special, incidental or consequential damages arising from the use of inability to use the product or documentation, even if advised of the possibility of such damages. The manufacturer keeps the rights in the subject to change the contents of this manual without prior notices in order to improve the function design, performance, quality and reliability. The author assumes no responsibility for any errors or omissions, which may appear in this manual, nor does it make a commitment to update the information contained herein.

Trademarks

Intel is a registered trademark of Intel Corporation.

Award is a registered trademark of Award Software, Inc.

All other trademarks, products and or product's name mentioned herein are mentioned for identification purposes only, and may be trademarks and/or registered trademarks of their respective companies or owners.

3302130 Quick Installation Guide

1.1 Packing List

Before you begin installing your single board, please make sure that the following materials have been shipped:

1 x 3302130 3.5" Embedded Board

1 x CD-ROM (For Driver used)

1 x Quick Installation Guide

1 x Warranty Card

1.2 Ordering Information

3302130A: 3.5" Embedded Controller with Intel Celeron M 1.0 GHz Processor and Zero Cache

3302130B: 3.5" Embedded Controller with Intel Celeron M 600 MHz Processor

1204150: Cable kit for 3302130

1.3 The Installation Paths of CD Driver

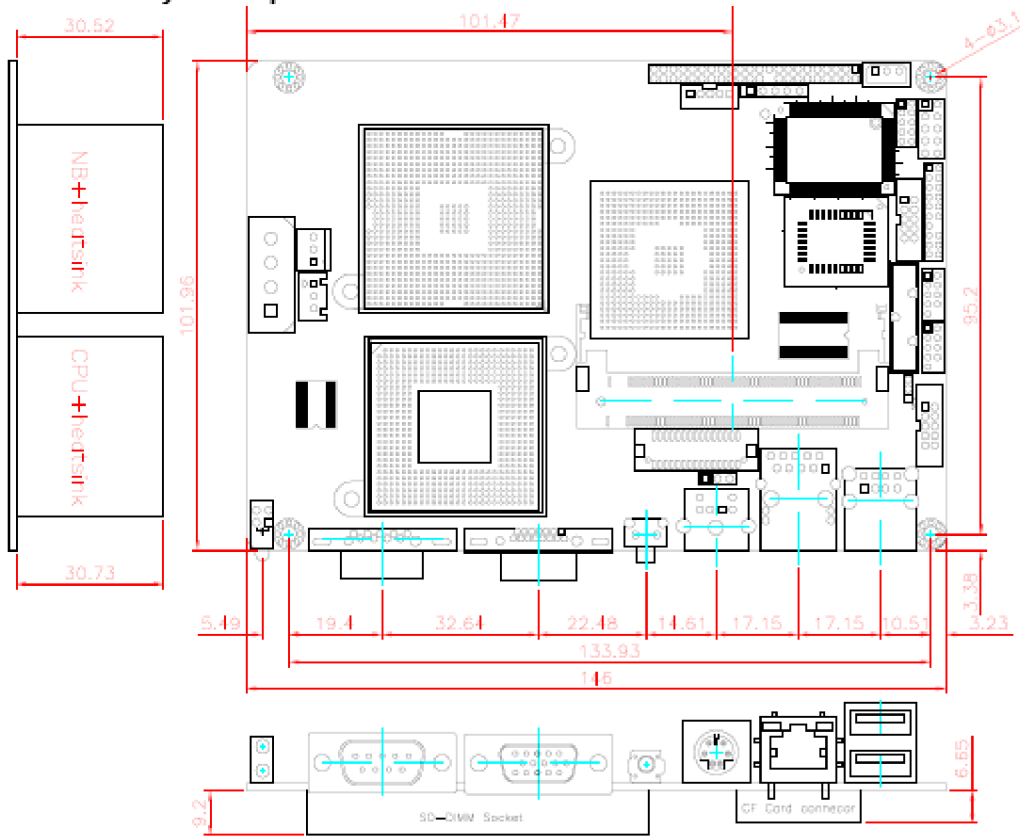
Driver:	Path:
CHIPSET	CD-ROM: \Chipset\INTEL\INF 7.2
VGA	CD-ROM: \Graphics\INTEL\85X.865
AUDIO	CD-ROM: \Audio\REALTEK\AC97
LAN	CD-ROM: \Ethernet\INTEL\PRO 10 & 100
MONITOR	CD-ROM: \H-Monitor\Winbond

1.4 Specification

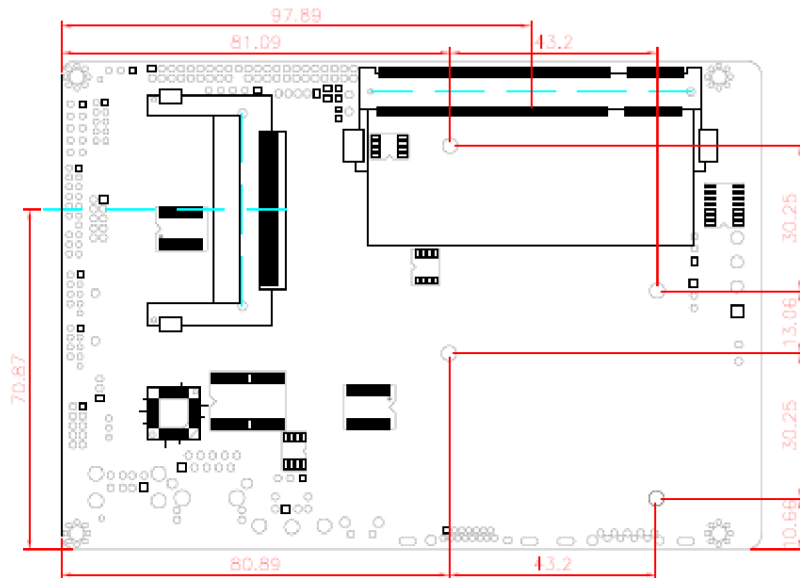
Form Factor	3.5" Embedded Board
CPU	µFC-BGA Intel® Celeron M 1.0GHz (Zero cache)
Chipset	Intel® 852GM + Intel® ICH4
System Memory	1 x 200-pin SO-DIMM Up to 1GB DDR200/266 SDRAM
VGA/ LCD Controller	Intel® 852GM Extreme Graphics 2 (2D/3D) up to 64MB w/ CRT/ LVDS (Dual independent display)
Ethernet	1 x Intel® 82562ET 10/100 Base-T Ethernet
I/O Chips	WINBOND W83627HG
BIOS	Phoenix-Award BIOS
Audio	ALC655 AC'97 Codec, Line-in/out, Mic-in
IDE Interface	1 x Ultra DMA 33, support 2 IDE drives
Serial Port	2 x COM port (RS-232)
Parallel Port/ Floppy	1 x SPP/EPP/ECP mode 1 x Floppy connector, shared with Parallel Port
KBMS	Standard PS/2 KBMS
Universal Serial Bus	6 x USB 2.0
DIO	8 bit programmable Digital I/O (4 bit In/ 4 bit Out)
LCD	18/36 bit LVDS
Expansion Interface	1 x CF II 1 x MiniPCI
Hardware Monitor Chip	Integrated in W83627HG
RTC	Real Time Clock
Operation Temp.	0°C - 60°C
Watchdog Timer	255-level Reset
Dimension (L x W)	146 x 102 mm (5.7" x 4")

1.5 Jumpers/ Connectors Quick Reference

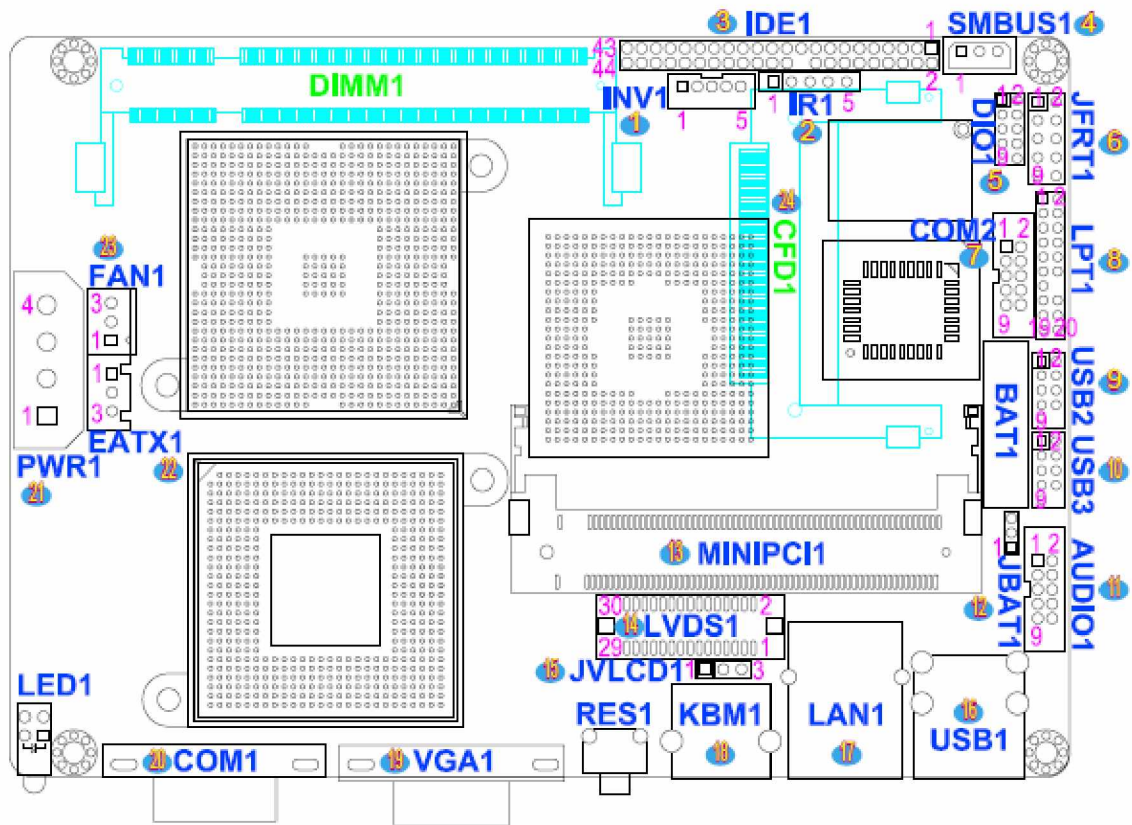
1.5.1 Board Layout Top View



1.5.2 Board Layout Bottom View



1.5.3 Jumpers & Connectors



Jumpers**1.5.4 JBAT1: CMOS Setup (12)**

Pin	Mode
1-2	Keep CMOS (Default)
2-3	Clear CMOS

1.5.5 JVLCD1: LCD Panel Voltage Select (15)

The voltage of LCD panel could be selected by JVLCD1 in 5V or 3.3V.

Pin	Voltage
1-2	5V
2-3	3.3V (Default)

Connectors**1.5.6 INV1: LCD Inverter Connector (1)**

Pin	Description
1	+12V
2	GND
3	Backlight on/off
4	Brightness control
5	GND

1.5.7 IR1: Infrared Connector (2)

Pin	Description
1	+5V
2	N/C
3	IRRX
4	GND
5	IRTX

1.5.8 IDE1: 44-pin IDE Connector (3)

Pin	Description	Pin	Description
1	IDE RESET	2	GND
3	DATA7	4	DATA8
5	DATA6	6	DATA9
7	DATA5	8	DATA10
9	DATA4	10	DATA11
11	DATA3	12	DATA12
13	DATA2	14	DATA13
15	DATA1	16	DATA14
17	DATA0	18	DATA15
19	GND	20	N/C
21	REQ	22	GND
23	IO WRITE	24	GND
25	IO READ	26	GND
27	IO READY	28	IDESEL
29	DACK	30	GND
31	IRQ14	32	N/C
33	ADDR1	34	ATA66 DETECT
35	ADDR0	36	ADDR2
37	CS#2	38	CS#3
39	IDEACTP	40	GND
41	VCC (+5V)	42	VCC (+5V)
43	GND	44	N/C

1.5.9 SMBUS1: External SMBus Connector (4)

Pin	Description
1	DATA
2	CLK
3	GND

1.5.10 DIO1: Digital I/O Connector (5)

DIO1 is a 8 bit GPIO connector w/ Onboard 10-pin BOX header connector, supports 4 bit In/ 4 bit Out

Pin	Description	Pin	Description
1	DIO1	2	DIO2
3	DIO3	4	DIO4
5	DIO5	6	DIO6
7	DIO7	8	DIO8
9	+5V	10	GND

1.5.11 JFRT1: Switches and Indicators (6)

It provides connectors for system indicators that provides light indication of the computer activities and switches to change the computer status.

Pin	Description	Pin	Description
1	RESET+	2	RESET-
3	Power LED+	4	Power LED-
5	HDD LED+	6	HDD LED-
7	SPEAKER+	8	SPEAKER-
9	PSON+	10	PSON-

1.5.12 COM2: RS-232 Connector (7)

Pin	Description	Pin	Description
1	DCD	2	RXD
3	TXD	4	DTR
5	GND	6	DSR
7	RTS	8	CTS
9	RI	10	N/C

1.5.13 LPT1: Parallel Port or FDD (8)

It can be selected by LPT or FDD mode via BIOS

Pin	Description	Pin	Description
1	STROBE	2	AFD
3	PTD0	4	Error
5	PTD1	6	INIT
7	PTD2	8	SLIN
9	PTD3	10	GND
11	PTD4	12	GND
13	PTD5	14	N/C
15	PTD6	16	Busy
17	PTD7	18	PE
19	ACK	20	Select

Parallel port connector is shared w/ FDD

Pin	Description	Pin	Description
1	N/C	2	RWC-
3	RINDEX-	4	HEAD-
5	TRAK0-	6	DIR-
7	WP-	8	STEP-
9	RDATA-	10	GND
11	DSKCHG-	12	GND
13	N/C	14	N/C
15	N/C	16	MOB-
17	N/C	18	WD-
19	DSB-	20	WE-

1.5.14 USB2/ USB3: USB Connector (9), (10)

Pin	Description	Pin	Description
1	+5V	2	+5V
3	USBD-	4	USBD-
5	USBD+	6	USBD+
7	GND	8	GND
9	GND	10	N/C

1.5.15 AUDIO1: Audio Interface (11)

ALC655 AC'97 Codec, is composed of Line in, Line out and Microphone jacks.

Pin	Description	Pin	Description
1	Line Left in	2	Line Right in
3	GND	4	GND
5	MIC	6	N/C
7	GND	8	GND
9	Speaker Left	10	Speaker Right

1.5.16 MINIPCI1: MiniPCI Interface (13)

1.5.17 LVDS1: LVDS LCD Connector (14)

The LVDS connector on board 30-pin header and supports 18/36-bit.

Pin	Description	Pin	Description
2	VDD	1	VDD
4	TX2CLK+	3	TX1CLK+
6	TX2CLK-	5	TX1CLK-
8	GND	7	GND
10	TX2D0+	9	TX1D0+
12	TX2D0-	11	TX1D0-
14	GND	13	GND
16	TX2D1+	15	TX1D1+
18	TX2D1-	17	TX1D1-
20	GND	19	GND
22	TX2D2+	21	TX1D2+
24	TX2D2-	23	TX1D2-
26	GND	25	GND
28	TX2D3+	27	TX1D3+
30	TX2D3-	29	TX1D3-

1.5.18 USB1 (16)

USB1 connector supports 2 x USB 2.0 w/ 480MB/s.

1.5.19 LAN1: 10/100 RJ-45 (17)

1.5.20 KBM1: PS/2 KBMS (18)

1.5.21 VGA1: CRT Connector (19)

1.5.22 COM1: RS-232 Connector (20)

1.5.23 PWR1: Power Connector (21)

Pin	Description
1	+12V
2	GND
3	GND
4	+5V

1.5.24 EATX1: ATX Feature Connector (22)

Pin	Description
1	PS-ON
2	GND
3	5V_SB

1.5.25 FAN1: FAN Connector (23)

Pin	Description
1	GND
2	+12V
3	Fan_Detect

1.5.26 CFD1: CompactFlash II (24)

3302130 Quick Installation Guide

Any advice or comments about our products and service, or anything we can help you with please don't hesitate to contact with us. We will do our best to support you for your products, projects and business.

Global American Inc.

Address: 17 Hampshire Drive
Hudson, NH 03051

TEL: Toll Free (U.S. Only) 800-833-8999
(603)886-3900

FAX: (603)886-4545

Website: <http://www.globalamericaninc.com>

E-Mail: salesinfo@globalamericaninc.com

