



**MANUAL**

**Version 1.0**

**3307680**

## **Copyrights**

This manual is copyrighted and all rights are reserved. It does not allow any non authorization in copied, photocopied, translated or reproduced to any electronic or machine readable form in whole or in part without prior written consent from the manufacturer.

In general, the manufacturer will not be liable for any direct, indirect, special, incidental or consequential damages arising from the use of inability to use the product or documentation, even if advised of the possibility of such damages. The manufacturer keeps the rights in the subject to change the contents of this manual without prior notices in order to improve the function design, performance, quality and reliability. The author assumes no responsibility for any errors or omissions, which may appear in this manual, nor does it make a commitment to update the information contained herein.

## **Trademarks**

Intel is a registered trademark of Intel Corporation.

Award is a registered trademark of Award Software, Inc.

All other trademarks, products and or product's name mentioned herein are mentioned for identification purposes only, and may be trademarks and/or registered trademarks of their respective companies or owners.

## Safety Instructions

---

1. Always read the safety instructions carefully.
2. Keep this User's Manual for future reference.
3. Keep this equipment away from humidity.
4. Lay this equipment on a reliable flat surface before setting it up.
5. The openings on the enclosure are for air convection hence protects the equipment from overheating. DO NOT COVER THE OPENINGS.
6. Make sure the voltage of the power source and adjust properly 110/220V before connecting the equipment to the power inlet.
7. Place the power cord such a way that people can not step on it. Do not place anything over the power cord.
8. Always Unplug the Power Cord before inserting any add-on card or module.
9. All cautions and warnings on the equipment should be noted.
10. Never pour any liquid into the opening that could damage or cause electrical shock.
11. If any of the following situations arises, get the equipment checked by service personnel:
  - † The power cord or plug is damaged.
  - † Liquid has penetrated into the equipment.
  - † The equipment has been exposed to moisture.
  - † The equipment does not work well or you can not get it work according to User's Manual.
  - † The equipment has dropped and damaged.
  - † The equipment has obvious sign of breakage.
12. DO NOT LEAVE THIS EQUIPMENT IN AN ENVIRONMENT UNCONDITIONED, STORAGE TEMPERATURE ABOVE 60°C (140°F), IT MAY DAMAGE THE EQUIPMENT.



**CAUTION:** Danger of explosion if battery is incorrectly replaced. Replace only with the same or equivalent type recommended by the manufacturer.



警告使用者:

這是甲類的資訊產品，在居住的環境中使用時，可能會造成無線電干擾，在這種情況下，使用者會被要求採取某些適當的對策。



廢電池請回收

For better environmental protection, waste batteries should be collected separately for recycling or special disposal.

## FCC-B Radio Frequency Interference Statement

---

This equipment has been tested and found to comply with the limits for a Class B digital device, pursuant to Part



**N1996**

15 of the FCC Rules. These limits are designed to provide reasonable protection against harmful interference in a residential installation. This equipment generates, uses and can radiate radio frequency energy and, if not installed and used in accordance with the instructions, may cause harmful interference to radio communications. However, there is no guarantee that interference will not occur in a particular installation. If this equipment does cause harmful interference to radio or television reception, which can be determined by turning the equipment off and on, the user is encouraged to try to correct the interference by one or more of the measures listed below.

- † Reorient or relocate the receiving antenna.
- † Increase the separation between the equipment and receiver.
- † Connect the equipment into an outlet on a circuit different from that to which the receiver is connected.
- † Consult the dealer or an experienced radio/television technician for help.

### Notice 1

The changes or modifications not expressly approved by the party responsible for compliance could void the user's authority to operate the equipment.

### Notice 2

Shielded interface cables and A.C. power cord, if any, must be used in order to comply with the emission limits.

VOIR LANOTICE D'INSTALLATION AVANT DE RACCORDER AU RESEAU.



*This device complies with Part 15 of the FCC Rules. Operation is subject to the following two conditions:*

- (1) this device may not cause harmful interference, and*
- (2) this device must accept any interference received, including interference that may cause undesired operation.*

## WEEE (Waste Electrical and Electronic Equipment) Statement

---



### ENGLISH

To protect the global environment and as an environmentalist, MSI must remind you that...

Under the European Union ("EU") Directive on Waste Electrical and Electronic Equipment, Directive 2002/96/EC, which takes effect on August 13, 2005, products of "electrical and electronic equipment" cannot be discarded as municipal waste anymore and manufacturers of covered electronic equipment will be obligated to take back such products at the end of their useful life. MSI will comply with the product take back requirements at the end of life of MSI-branded products that are sold into the EU. You can return these products to local collection points.

### DEUTSCH

Hinweis von MSI zur Erhaltung und Schutz unserer Umwelt

Gemäß der Richtlinie 2002/96/EG über Elektro- und Elektronik-Altgeräte dürfen Elektro- und Elektronik-Altgeräte nicht mehr als kommunale Abfälle entsorgt werden. MSI hat europaweit verschiedene Sammel- und Recyclingunternehmen beauftragt, die in die Europäische Union in Verkehr gebrachten Produkte, am Ende seines Lebenszyklus zurückzunehmen. Bitte entsorgen Sie dieses Produkt zum gegebenen Zeitpunkt ausschliesslich an einer lokalen Altgerätesammelstelle in Ihrer Nähe.

### FRANÇAIS

En tant qu'écologiste et afin de protéger l'environnement, MSI tient à rappeler ceci...

Au sujet de la directive européenne (EU) relative aux déchets des équipements électriques et électroniques, directive 2002/96/EC, prenant effet le 13 août 2005, que les produits électriques et électroniques ne peuvent être déposés dans les décharges ou tout simplement mis à la poubelle. Les fabricants de ces équipements seront obligés de récupérer certains produits en fin de vie. MSI prendra en compte cette exigence relative au retour des produits en fin de vie au sein de la communauté européenne. Par conséquent vous pouvez retourner localement ces matériels dans les points de collecte.

### РУССКИЙ

Компания MSI предпринимает активные действия по защите окружающей среды, поэтому напоминаем вам, что...

В соответствии с директивой Европейского Союза (ЕС) по предотвращению загрязнения окружающей среды использованным электрическим и электронным оборудованием (директива WEEE 2002/96/ЕС), вступающей в силу 13 августа 2005 года, изделия, относящиеся к электрическому и электронному оборудованию, не могут рассматриваться как бытовой мусор, поэтому производители вышеперечисленного электронного оборудования обязаны принимать его для переработки по окончании срока службы. MSI обязуется соблюдать требования по приему продукции, проданной под маркой MSI на территории ЕС, в переработку по окончании срока службы. Вы можете вернуть эти изделия в специализированные пункты приема.

## **ESPAÑOL**

MSI como empresa comprometida con la protección del medio ambiente, recomienda:

Bajo la directiva 2002/96/EC de la Unión Europea en materia de desechos y/o equipos electrónicos, con fecha de rigor desde el 13 de agosto de 2005, los productos clasificados como "eléctricos y equipos electrónicos" no pueden ser depositados en los contenedores habituales de su municipio, los fabricantes de equipos electrónicos, están obligados a hacerse cargo de dichos productos al término de su periodo de vida. MSI estará comprometido con los términos de recogida de sus productos vendidos en la Unión Europea al final de su periodo de vida. Usted debe depositar estos productos en el punto limpio establecido por el ayuntamiento de su localidad o entregar a una empresa autorizada para la recogida de estos residuos.

## **NEDERLANDS**

Om het milieu te beschermen, wil MSI u eraan herinneren dat...

De richtlijn van de Europese Unie (EU) met betrekking tot Vervuiling van Elektrische en Electronische producten (2002/96/EC), die op 13 Augustus 2005 in zal gaan kunnen niet meer beschouwd worden als vervuiling.

Fabrikanten van dit soort producten worden verplicht om producten retour te nemen aan het eind van hun levenscyclus. MSI zal overeenkomstig de richtlijn handelen voor de producten die de merknaam MSI dragen en verkocht zijn in de EU. Deze goederen kunnen geretourneerd worden op lokale inzamelingspunten.

## **SRPSKI**

Da bi zaštitili prirodnu sredinu, i kao proizvođače koje vodi računa o okolini i prirodnoj sredini, MSI mora da vas podesti da...

Po Direktivi Evropske unije ("EU") o odbačenju električnskoj i električnoj opremi, Direktiva 2002/96/EC, koja stupa na snagu od 13. Avgusta 2005, proizvodi koji spadaju pod "elektronsku i električnu opremu" ne mogu više biti odbačeni kao običan otpad i proizvođači ove opreme biće prinudeni da zamu natrag ove proizvode na kraju njihovog uobičajenog veka trajanja. MSI će poštovati zahtev o preuzimanju ovalvih proizvoda kojima je istekao vek trajanja, koji imaju MSI oznaku i koji su prodati u EU. Ove proizvode možete vratiti na lokalnim mestima za prikupljanje.

## **POLSKI**

Aby chronić nasze środowisko naturalne oraz jako firma dbająca o ekologię, MSI przypomina, że...

Zgodnie z Dyrektywą Unii Europejskiej ("UE") dotyczącą odpadów produktów elektrycznych i elektronicznych (Dyrektywa 2002/96/EC), która wchodzi w życie 13 sierpnia 2005, tzw. "produkty oraz wyposażenie elektryczne i elektroniczne" nie mogą być traktowane jako śmieci komunalne, tak więc producenci tych produktów będą zobowiązani do odbierania ich w momencie gdy produkt jest wycofywany z użycia. MSI wypełni wymagania UE, przyjmując produkty (sprzedawane na terenie Unii Europejskiej) wycofywane z użycia. Produkty MSI będzie można zwracać w wyznaczonych punktach zbiorczych.

## TÜRKÇE

Çevreci özelliğiyle bilinen MSI dünyada çevreyi korumak için hatırlatır:

Avrupa Birliği (AB) Kararnamesi Elektrik ve Elektronik Malzeme Atığı, 2002/96/EC Kararnamesi altında 13 Ağustos 2005 tarihinden itibaren geçerli olmak üzere, elektrikli ve elektronik malzemeler diğer atıklar gibi çöpe atılmayacak ve bu elektronik cihazların üreticileri, cihazların kullanım süreleri bittikten sonra ürünleri geri toplamakla yükümlü olacaktır. Avrupa Birliği'ne satılan MSI markalı ürünlerin kullanım süreleri bittiğinde MSI ürünlerin geri alınması isteği ile İşbirliği içerisinde olacaktır. Ürünlerinizi yerel toplama noktalarına bırakabilirsiniz.

## ČESKY

Záleží nám na ochraně životního prostředí - společnost MSI upozorňuje...

Podle směrnice Evropské unie ("EU") o likvidaci elektrických a elektronických výrobků 2002/96/EC platné od 13. srpna 2005 je zakázáno likvidovat "elektrické a elektronické výrobky" v běžném komunálním odpadu a výrobci elektrických výrobků, na které se tato směrnice vztahuje, budou povinni odebrat takové výrobky zpět po skončení jejich životnosti. Společnost MSI splní požadavky na odebrání výrobků značky MSI, prodávaných v zemích EU, po skončení jejich životnosti. Tyto výrobky můžete odevzdat v místních sběrnách.

## MAGYAR

Annak érdekében, hogy környezetünket megvédjük, illetve környezetvédként fellépve az MSI emlékezteti Önt, hogy ...

Az Európai Unió („EU”) 2005. augusztus 13-án hatályba lépő, az elektromos és elektronikus berendezések hulladékairól szóló 2002/96/EK irányelve szerint az elektromos és elektronikus berendezések többé nem kezelhetők lakossági hulladékként, és az ilyen elektronikus berendezések gyártói kötelesek válnak az ilyen termékek visszavételére azok hasznos élettartama végén. Az MSI botartja a termékvisszavétellel kapcsolatos követelményeket az MSI márkanév alatt az EU-n belül értékesített termékek esetében, azok élettartamának végén. Az ilyen termékeket a legközelebbi gyűjtőhelyre viheti.

## ITALIANO

Per proteggere l'ambiente, MSI, da sempre amica della natura, ti ricorda che...

In base alla Direttiva dell'Unione Europea (EU) sullo Smaltimento dei Materiali Elettrici ed Elettronici, Direttiva 2002/96/EC in vigore dal 13 Agosto 2005, prodotti appartenenti alla categoria dei Materiali Elettrici ed Elettronici non possono più essere eliminati come rifiuti municipali: i produttori di detti materiali saranno obbligati a ritirare ogni prodotto alla fine del suo ciclo di vita. MSI si addegnerà a tale Direttiva ritirando tutti i prodotti marchiati MSI che sono stati venduti all'interno dell'Unione Europea alla fine del loro ciclo di vita. È possibile portare i prodotti nel più vicino punto di raccolta.

# CONTENTS

Copyright Notice .....	ii
Trademarks .....	ii
Revision History .....	ii
Technical Support .....	ii
Safety Instructions .....	iii
Warranty Policy .....	iv
FCC-B Radio Frequency Interference Statement .....	v
WEEE (Waste Electrical and Electronic Equipment) Statement .....	vi
<b>Chapter 1 Getting Started .....</b>	<b>1-1</b>
Mainboard Specifications .....	1-2
Mainboard Layout .....	1-4
<b>Chapter 2 Hardware Setup .....</b>	<b>2-1</b>
Quick Components Guide .....	2-2
CPU (Central Processing Unit) .....	2-3
Introduction to LGA 775 CPU .....	2-3
CPU Installation .....	2-4
Cooler Installation .....	2-5
Memory .....	2-6
Installing DDRII Modules .....	2-6
Power Supply .....	2-7
ATX 12V Power Connector: JPW1 .....	2-7
Bracket I/O .....	2-8
Connectors .....	2-9
Temperature Sensor Connector: JRT1 .....	2-9
ATA133 Hard Disk Connector: IDE1 .....	2-9
Serial ATA Connectors: SATA1, SATA2 .....	2-10
Fan Power Connector: CPU_FAN1 .....	2-11
Serial Port Connectors: COM1, COM 2 .....	2-11
Front Panel Connector: JFP1 .....	2-12
Front Audio Connector: JAUD1 .....	2-13
Front USB Connectors: F_USB1, F_USB2 .....	2-14
Parallel Port Header: J1 .....	2-15
Jumpers .....	2-17
Clear BIOS Password Jumper: JPWD1 .....	2-16
Clear CMOS Jumper: JBAT1 .....	2-16
COM1 Jumpers: JP1, JP2, JP3 .....	2-17



Golden Finger .....	2-18
PCI/ISAGolden Finger .....	2-18
<b>Chapter 3 BIOS Setup .....</b>	<b>3-1</b>
Entering Setup .....	3-2
Control Keys .....	3-3
Getting Help .....	3-3
General Help <F1> .....	3-3
The Menu Bar .....	3-4
Main .....	3-5
Advanced .....	3-7
Boot .....	3-20
Security .....	3-21
System .....	3-23
PCHealth .....	3-25
Exit .....	3-25

## Chapter 1

# Getting Started

Thank you for choosing the 3307626 PCI/ISA Single Board Computer from Global American.

Based on the innovative **Intel® Q965/Q963 & ICH8** controllers for optimal system efficiency, the 3307626 accommodates the latest **Intel® Core™ 2 Duo/Pentium® 4/Pentium® D/Celeron® D** processors in LGA775 socket and supports two 240-pin 800 (Q965 only)/667/533MHz DDRII DIMM slots to provide the maximum of 2GB memory capacity.

This PCI/ISA SBC is more maintainable than a conventional motherboard system and has a much lower mean time to repair (MTTR). It's easily upgradeable and provides configuration control for longer product lifetime.

## Mainboard Specifications

### Processor Support

- Intel® Core™ 2 Duo/Pentium® 4/Pentium® D/Celeron® D processors in Socket LGA775
- Supports 4-pin CPU fan pinheader
- Supports Intel Dual Core™ Technology

### Supported FSB

- 1066/ 800/ 533 MHz

### Chipset

- North Bridge: Intel® Q965/Q963 chipset
- South Bridge: Intel® ICH8 chipset

### Memory Support

- 2 DDRII 800 (Q965 only)/667/533 DIMM slots (240 pins/1.8V)
- 2 GB memory capacity

### LAN

- 1 or 2 PCIE x1 Gb LAN by Marvell 88E8056 (optional)

### Audio

- Realtek® ALC883 Codec
- 1 front audio pinheader

### IDE (optional)

- 1 ATA133 IDE port by JMicron® JMB361

### SATA

- 2 SATA II ports by ICH8
- Supports 2 SATA II devices
- Supports storage and data transfers at up to 300 MB/s

### ISA Bridge

- ITE IT8888G-L

### Connectors

#### ● Bracket I/O

- 1 PS/2 mouse/keyboard port
- 1 or 2 Gb LAN ports (optional)
- 1 VGA port

#### ● Onboard Pinheaders

- 1 front panel pinheader
- 1 front audio pinheader
- 2 universal serial ports (COM2 supports RS232; COM1 supports RS232, RS422, RS485)
- 2 USB 2.0 pinheaders
- 1 IDE connector
- 1 parallel port pinheader
- 2 SATA connectors

### Golden Finger

- Supports ISA & PCI

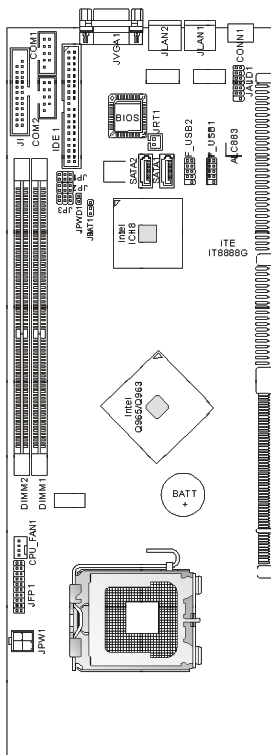
### Form Factor

- SBC (Single Board Computer): 12.3cm x 33.9cm

### Environmental Specs

- Operating Temperature: 0°C ~ +50°C

## Mainboard Layout



3307626 (v1.X) Single Board Computer

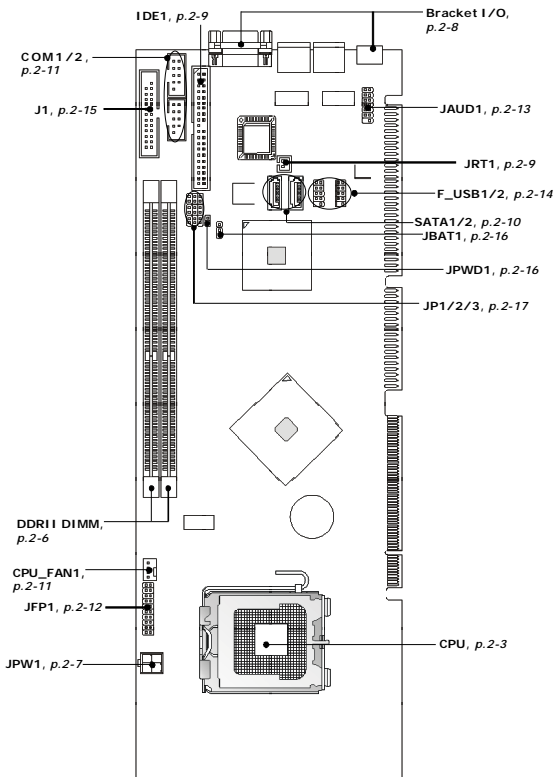
## Chapter 2

# Hardware Setup

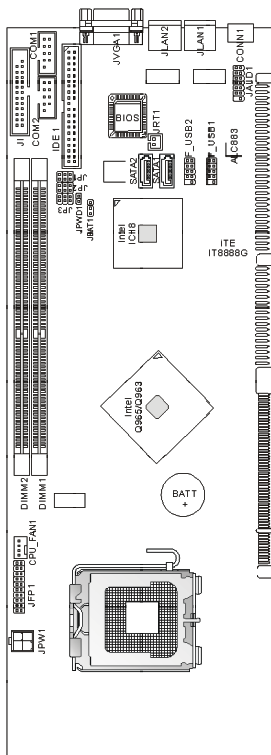
This chapter provides you with the information about hardware setup procedures. While doing the installation, be careful in holding the components and follow the installation procedures. For some components, if you install in the wrong orientation, the components will not work properly.

Use a grounded wrist strap before handling computer components. Static electricity may damage the components.

## Quick Components Guide



## Mainboard Layout



3307626 (v1.X) Single Board Computer

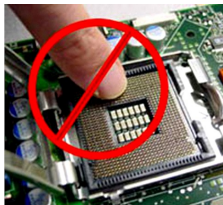


## CPU Installation

When integrating a Pentium 4 processor-based system, be sure to take the proper electrostatic discharge (ESD) precautions. Consider using ground straps, gloves, ESD mats, or other protective measures to avoid damaging the processor and other electrical components in the system.



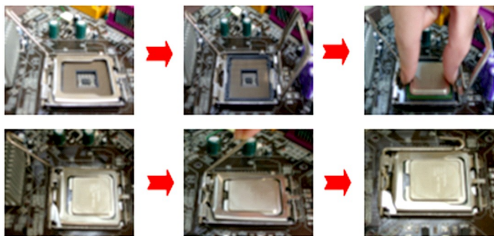
*Do not touch socket sensitive contacts. We assume no responsibility for the potential damages caused by this action and therefore the warranty we provide may be invalid.*



*Note: In order to boot up with a newly installed CPU, AC Power must be switched off before installation.*

- n Disengage Load Lever by depressing down and out on the hook to clear retention tab. Rotate Load Lever to fully open position at approximately 135°
- n Rotate Load Plate to fully open position at approximately 100°. Remove Socket Protective Cover. With left hand index finger and thumb to support the load plate edge, engage protective cover finger tab with right hand thumb and peel the cover from LGA775 Socket while pressing on center of protective cover to assist in removal.
- n Locate two orientation key notches.
- n Grasp processor with thumb and index finger. (Grasp the edges without the orientation notches.) The socket has cutouts for your fingers to fit into. Carefully place the package into the socket body using a purely vertical motion. (Tilting the processor into place or shifting it into place on the socket can damage the sensitive socket contacts.)
- n Verify that package is within the socket body and properly mated to the orientation keys

- n Close the socket by
1. Close the Load Plate
  2. While pressing down lightly on Load Plate, engage the Load Lever.
  3. Secure Load Lever with Load Plate tab under retention tab of Load Lever.



## Cooler Installation



*This processor has to fit a special cooling fan. When the processor runs, it will increase the internal ambient temperature. A chassis with a maximum internal ambient temperature of 38°C at the processor fan inlet is a requirement. Failure to provide this could result in damage to the board. Please make sure the cooler has been recommended by Intel. For more details, go to <http://www.intel.com>.*

Smear thermal grease on the top of the CPU. Lower the CPU fan onto the CPU and socket, and secure it using the attachments or screws provided on the fan. Finally, attach the fan power cable to the CPU FAN adapter.



*Warning! Please make sure that you use a CPU cooler bundled with a retention module to keep PCB from crookedness. A crooked SBC may probably result in unknown problem.*

## Memory

The mainboard provides two 240-pin non-ECC Dual-Channel DDRII 800 (for Q965 only) / 667 / 533 DIMM slots and supports up to 2GB system memory.

**DDRII**  
240-pin, 1.8V



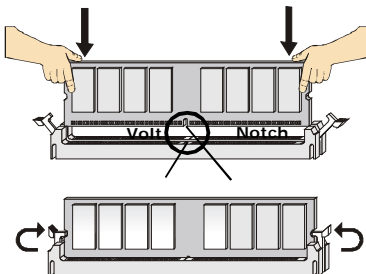
### Installing DDRII Modules

1. The memory module has only one notch on the center and will only fit in the right orientation.
2. Insert the memory module vertically into the DIMM slot. Then push it in until the golden finger on the memory module is deeply inserted in the DIMM slot.



### Important

*You can barely see the golden finger if the memory module is properly inserted in the DIMM slot.*



## Power Supply

### ATX 12V Power Connector: JPW1

This 12V power connector is used to provide power to the CPU.

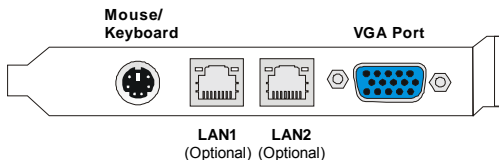


**JPW1**

#### JPW1 Pin Definition

PIN	SIGNAL
1	GND
2	GND
3	12V
4	12V

## Bracket I/O



► **Mouse/Keyboard Connector**

The standard PS/2® mouse/keyboard DIN connector is for a PS/2® mouse/keyboard.

► **VGA Connector**

The DB15-pin female connector is provided for VGA monitors.

► **LAN (RJ-45) Jack**

The standard RJ-45 jack is for connection to single Local Area Network (LAN). You can connect a network cable to it.



LED	Color	LED State	Condition
Left	Yellow	Off	LAN link is not established.
		On (steady state)	LAN link is established.
		On (brighter & pulsing)	The computer is communicating with another computer on the LAN.
Right	Green	Off	10 Mbit/sec data rate is selected.
		On	100 Mbit/sec data rate is selected.
	Yellow	On	1000 Mbit/sec data rate is selected.

## Connectors

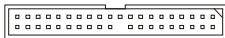
### Temperature Sensor Connector: JRT1

This connector is used to connect an external temperature sensor.



### ATA133 Hard Disk Connector: IDE1

The mainboard has a 32-bit Enhanced PCI IDE and Ultra DMA 66/100/133 controller that provides PIO mode 0~4, Bus Master, and Ultra DMA 66/100/133 function. You can connect hard disk drives, CD-ROM and other IDE devices.



IDE1

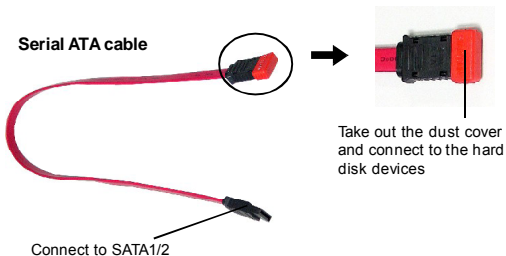
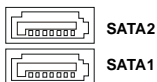


### Important

*If you install two hard disks on cable, you must configure the second drive to Slave mode by setting its jumper. Refer to the hard disk documentation supplied by hard disk vendors for jumper setting instructions.*

### Serial ATA Connectors: SATA1, SATA2

SATA1~SATA2 are high-speed SATA II interface ports and support SATA II data rates of 300MB/s. Each SATA II connector can connect to 1 hard disk device and is fully compliant with Serial ATA 2.0 specifications.



#### Important

*Please do not fold the Serial ATA cable into 90-degree angle. Otherwise, data loss may occur during transmission.*

## Fan Power Connector: CPU\_FAN1

The fan power connector supports system cooling fan with +12V. When connecting the wire to the connectors, always take note that the red wire is the positive and should be connected to the +12V, the black wire is Ground and should be connected to GND. If the mainboard has a System Hardware Monitor chipset on-board, you must use a specially designed fan with speed sensor to take advantage of the CPU fan control.



**CPU\_FAN1**



### Important

*Please refer to the recommended CPU fans at Intel® / AMD® official website or consult the vendors for proper CPU cooling fan.*

## Serial Port Connectors: COM1, COM 2

The mainboard provides 9-pin headers as RS232/422/485 COM ports to connect serial devices.



**COM1/2**

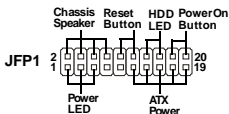
### Pin Definition

PIN	SIGNAL	DESCRIPTION
1	DCD	Data Carry Detect
2	SIN	Serial In or Receive Data
3	SOUT	Serial Out or Transmit Data
4	DTR	Data Terminal Ready
5	GND	Ground
6	DSR	Data Set Ready
7	RTS	Request To Send
8	CTS	Clear To Send
9	RI	Ring Indicate



## Front Panel Connector: JFP1

The mainboard provides one front panel connector for electrical connection to the front panel switches and LEDs. The JFP1 is compliant with Intel® Front Panel I/O Connectivity Design Guide.



**JFP1 Pin Definition**

PIN	SIGNAL	FUNCTION	PINGROUP
1	+5V	Power	PowerLED
3	NC	No Connection	
5	PLED	PowerLED Signal	
7	NC	No Connection	
9	GND	Ground	ATXPower
11	GND	Ground	
13	NC	No Connection	
15	PWRON	Power-On Signal	
17	+5VSB	StandbyPower	
19	NC	No Connection	
2	WDSPK	SpeakerSignal	Chassis Speaker
4	NC	No Connection	
6	NC	No Connection	
8	+5V	Power	
10	RESETBT	Reset Button Signal	Reset Button
12	GND	Ground	
14	HDDLED	Hard Disk LED Signal	Hard Disk LED
16	+5V	Power	
18	+5VSB	StandbyPower	Power On Button
20	PWRBT	Power Button Signal	

## Front Audio Connector: JAUD1

The JAUD1 is used to connect an optional audio bracket that provides extra front panel audio IO jacks.



**JAUD1 Pin Definition**

PIN	SIGNAL	PIN	SIGNAL
1	LINE_IN_R	2	MIC_IN_R
3	LINE_IN_L	4	MIC_IN_L
5	LINE_OUT_R	6	MIC_IN_JD
7	LINE_OUT_L	8	LINE_IN_JD
9	LINE_OUT_JD	10	GND
11	GND	12	GND
13	NC	14	GND

## Front USB Connectors: F\_USB1, F\_USB2

The mainboard provides two USB 2.0 pinheaders (optional USB 2.0 bracket available) that are compliant with Intel® I/O Connectivity Design Guide. USB 2.0 technology increases data transfer rate up to a maximum throughput of 480Mbps, which is 40 times faster than USB 1.1, and is ideal for connecting high-speed USB interface peripherals such as **USB HDD, digital cameras, MP3 players, printers, modems and the like.**

### F\_USB1/2



### Pin Definition

PIN	SIGNAL	PIN	SIGNAL
1	VCC	2	VCC
3	USB0-	4	USB1-
5	USB0+	6	USB1+
7	GND	8	GND
9	Key (no pin)	10	USBOC

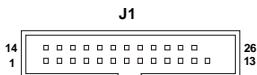


### Important

*Note that the pins of VCC and GND must be connected correctly to avoid possible damage.*

## Parallel Port Header: J1

The mainboard provides a 26-pin header for connection to an optional parallel port bracket. The parallel port is a standard printer port that supports Enhanced Parallel Port (EPP) and Extended Capabilities Parallel Port (ECP) mode.



**Pin Definition**

PIN	SIGNAL	DESCRIPTION
1	STROBE	Strobe
2	DATA0	Data0
3	DATA1	Data1
4	DATA2	Data2
5	DATA3	Data3
6	DATA4	Data4
7	DATA5	Data5
8	DATA6	Data6
9	DATA7	Data7
10	ACK#	Acknowledge
11	BUSY	Busy
12	PE	PaperEnd
13	SELECT	Select
14	AUTO FEED#	Automatic Feed
15	ERR#	Error
16	INIT#	Initialize Printer
17	SLIN#	Select In
18	GND	Ground
19	GND	Ground
20	GND	Ground
21	GND	Ground
22	GND	Ground
23	GND	Ground
24	GND	Ground
25	GND	Ground

## Jumpers

### Clear BIOS Password Jumper: JPWD1

The jumper is used to clear the BIOS password. You can clear BIOS password by shorting this jumper with a jumper cap while the system is off. Then restart the system. Be sure to remove the jumper cap to return to normal operation on next boot. Avoid clearing the password while the system is on; it will damage the mainboard.

JPWD1



Clear



Normal

### Clear CMOS Jumper: JBAT1

There is a CMOS RAM onboard that has a power supply from external battery to keep the data of system configuration. With the CMOS RAM, the system can automatically boot OS every time it is turned on. If you want to clear the system configuration, set the JBAT1 (Clear CMOS Jumper) to clear data.

JBAT1



Keep Data



Clear Data

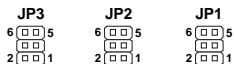


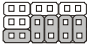


### Important

*You can clear CMOS by shorting 2-3 pin while the system is off. Then return to 1-2 pin position. Avoid clearing the CMOS while the system is on; it will damage the mainboard.*

**COM1 Jumpers: JP1, JP2, JP3**

These jumpers specify the COM1 function.

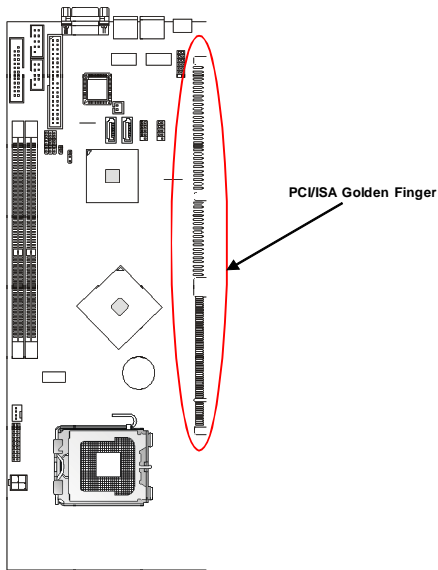


<p><b>RS-232</b> (JP3: 1-2 JP2: 1-3, 2-4 JP1: 1-3, 2-4)</p>	 <p><b>JP3 JP2 JP1</b></p>
<p><b>RS-422</b> (JP3: 3-4 JP2: 3-5, 4-6 JP1: 3-5, 4-6)</p>	 <p><b>JP3 JP2 JP1</b></p>
<p><b>RS-485</b> (JP3: 5-6 JP2: 3-5, 4-6 JP1: 3-5, 4-6)</p>	 <p><b>JP3 JP2 JP1</b></p>

## Golden Finger

### PCI/ISA Golden Finger

This PCI/ISA SBC board has two edge connectors on it - one for the PCI bus and one for the ISA bus.



## Chapter 3

# BIOS Setup

This chapter provides information on the BIOS Setup program and allows you to configure the system for optimum use.

You may need to run the Setup program when:

- ⌘ An error message appears on the screen during the system booting up, and requests you to run SETUP.
- ⌘ You want to change the default settings for customized features.



## Entering Setup

Power on the computer and the system will start POST (Power On Self Test) process. When the message below appears on the screen, press <F1> key to enter Setup.

### Press F1 to enter SETUP

If the message disappears before you respond and you still wish to enter Setup, restart the system by turning it OFF and On or pressing the RESET button. You may also restart the system by simultaneously pressing <Ctrl>, <Alt>, and <Delete> keys.



### Important

1. The items under each BIOS category described in this chapter are under continuous update for better system performance. Therefore, the description may be slightly different from the latest BIOS and should be held for reference only.
2. Upon boot-up, the 1st line appearing after the memory count is the BIOS version. It is usually in the format:

*P9643IMS V1.0 091506 where:*

*1st digit refers to BIOS maker as A = AMI, W = AWARD, and P = PHOENIX.*

*2nd - 5th digit refers to the model number.*

*6th digit refers to the chipset as I = Intel, N = nVidia, and V = VIA.*

*7th - 8th digit refers to the customer as MS = all standard customers.*

*V1.0 refers to the BIOS version.*

*091506 refers to the date this BIOS was released.*

## Control Keys

<↑>	Move to the previous item
<↓>	Move to the next item
<←>	Move to the item in the left hand
<→>	Move to the item in the right hand
<Enter>	Select the item
<Esc>	Jumps to the Exit menu or returns to the main menu from a submenu
<+/PU>	Increase the numeric value or make changes
<-/PD>	Decrease the numeric value or make changes
<F6>	Load Optimized Defaults
<F7>	Load Fail-Safe Defaults
<F10>	Save all the CMOS changes and exit

## Getting Help

After entering the Setup menu, the first menu you will see is the Main Menu.

### Main Menu

The main menu lists the setup functions you can make changes to. You can use the arrow keys (↑↓) to select the item. The on-line description of the highlighted setup function is displayed at the bottom of the screen.

### Sub-Menu

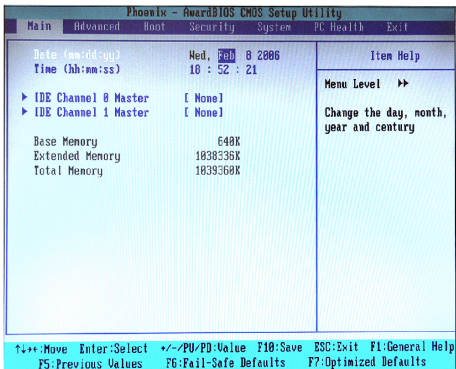
If you find a right pointer symbol (as shown in the right view) appears to the left of certain fields that means a sub-menu can be launched from this field. A sub-menu contains additional options for a field parameter. You can use arrow keys (↑↓) to highlight the field and press <Enter> to call up the sub-menu. Then you can use the control keys to enter values and move from field to field within a sub-menu. If you want to return to the main menu, just press the <Esc>.

▶ IDE Channel 0 Master  
▶ IDE Channel 1 Master

## General Help <F1>

The BIOS setup program provides a General Help screen. You can call up this screen from any menu by simply pressing <F1>. The Help screen lists the appropriate keys to use and the possible selections for the highlighted item. Press <Esc> to exit the Help screen.

## The Menu Bar



### ▶ Main

Use this menu for basic system configurations, such as time, date etc.

### ▶ Advanced

Use this menu to set up the items of special enhanced features available on your system's chipset.

### ▶ Boot

Use this menu to specify the priority of boot devices.

### ▶ Security

Use this menu to set Supervisor and User Passwords.

### ▶ System

This entry shows your system summary.

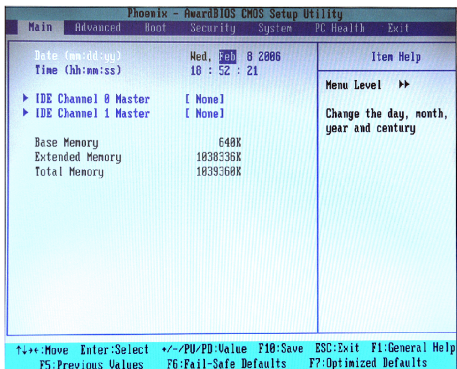
### ▶ PC Health

This entry monitors your hardware health status.

### ▶ Exit

This menu allows you to load the BIOS default values or factory default settings into the BIOS and exit the BIOS setup utility with or without changes.

## Main



► **Date (mm:dd:yy)**

The date format is <Day>, <Month> <Date> <Year>.

► **Time (hh:mm:ss)**

The time format is <Hour> <Minute> <Second>.

► **IDE Channel 0/1 Master**

[Type]

Press PgUp/<+> or PgDn/<-> to select [Manual], [None] or [Auto] type. Note that the specifications of your drive must match with the drive table. The hard disk will not work properly if you enter improper information for this category. If your hard disk drive type is not matched or listed, you can use [Manual] to define your own drive type manually.

[Multi-Sector Transfers]

Any selection except Disabled determines the number of sectors transferred per block. Enabling LBA causes Logical Block Addressing to be used in place of Cylinders, Heads and Sectors.

[LBA Mode Control]

Enables 32-bit communication between CPU and IDE card

[32-Bit I/O]

[Transfer Mode]

Selects the method for transferring the data between the hard disk and system memory

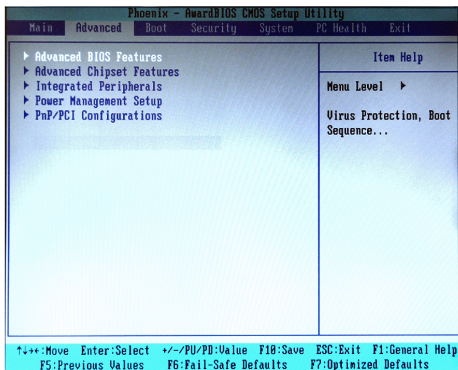
[Ultra DMA Mode]

Indicates the type of Ultra DMA

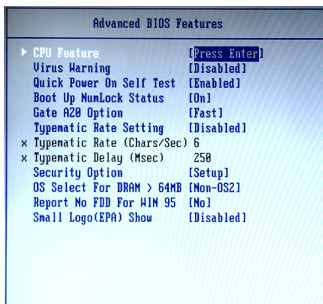
► **Base/Extended/Total Memory**

The three items show the memory status of the system. (Read-only)

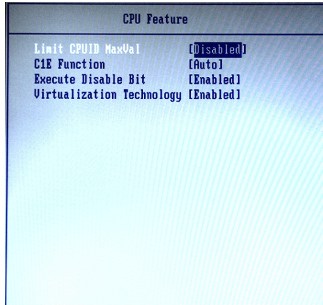
## Advanced



### ▶ Advanced BIOS Features



## ► CPU Feature

► **Limit CPUID MaxVal**

This setting controls the Max CPUID extended function value.

► **C1E Function**

This item allows you to enable/disable the C1E power management feature which can drop clock speed and voltage on the processor.

► **Execute Disable Bit**

Intel's Execute Disable Bit functionality can prevent certain classes of malicious "buffer overflow" attacks when combined with a supporting operating system. This functionality allows the processor to classify areas in memory by where application code can execute and where it cannot. When a malicious worm attempts to insert code in the buffer, the processor disables code execution, preventing damage or worm propagation.

► **Virtualization Technology**

Virtualization enhanced by Intel Virtualization Technology will allow a platform to run multiple operating systems and applications in independent partitions. With virtualization, one computer system can function as multiple "virtual" systems.

► **Virus Warning**

The item is to set the Virus Warning feature for IDE Hard Disk boot sector protection. If the function is enabled and any attempt to write data into this area is made, BIOS will display a warning message on screen and beep.

► **Quick Power On Self Test**

Select [Enabled] to reduce the amount of time required to run the power-on self-test (POST). A quick POST skips certain steps. We recommend that you normally disable quick POST. Better to find a problem during POST than lose data during your work.

► **Boot Up NumLock Status**

This setting is to set the Num Lock status when the system is powered on. Setting to [On] will turn on the Num Lock key when the system is powered on. Setting to [Off] will allow users to use the arrow keys on the numeric keypad.

► **Gate A20 Option**

This item is to set the Gate A20 status. A20 refers to the first 64KB of extended memory. When the default value [Fast] is selected, the Gate A20 is controlled by Port92 or chipset specific method resulting in faster system performance. When [Normal] is selected, A20 is controlled by a keyboard controller or chipset hardware.

► **Typematic Rate Setting**

This item is used to enable or disable the typematic rate setting including Typematic Rate & Typematic Delay.

► **Typematic Rate (Chars/Sec)**

After Typematic Rate Setting is enabled, this item allows you to set the rate (characters/second) at which the keys are accelerated.

► **Typematic Delay (Msec)**

This item allows you to select the delay between when the key was first pressed and when the acceleration begins.

► **Security Option**

This specifies the type of BIOS password protection that is implemented. Settings are described below:

Option	Description
[Setup]	The password prompt appears only when end users try to run Setup.
[System]	A password prompt appears every time when the computer is powered on or when end users try to run Setup.

► **OS Select For DRAM > 64MB**

This allows you to run the OS/2® operating system with DRAM larger than 64MB. When you choose [Non-OS2], you cannot run the OS/2® operating system with DRAM larger than 64MB. But it is possible if you choose [OS2].

► **Report No FDD for WIN 95**

For compatibility with Windows 95 logo certification, select [Yes] to release IRQ6 when the system contains no floppy drive. When this setting is set to [Yes], users have to disable the Onboard FDD Controller.

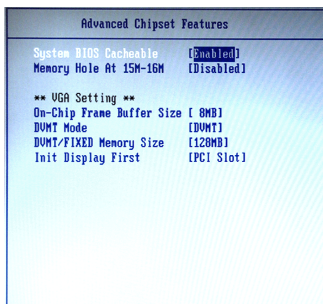


► **Small Logo(EPA) Show**

This item enables you to show the EPA logo (brand specific graphics) on the bootup screen. Settings are:

- |            |   |
|------------|---|
| [Disabled] | Shows the normal POST screen at boot.                 |
| [Enabled]  | Shows a still image (EPA logo) on the screen at boot. |

## ► Advanced Chipset Features



### ► System BIOS Cacheable

Selecting [Enabled] allows caching of the system BIOS ROM at F0000h-FFFFFh, resulting in better system performance. However, if any program writes to this memory area, a system error may result.

### ► Memory Hole At 15M-16M

In order to improve performance, certain space in memory can be reserved for ISA peripherals. This memory must be mapped into the memory space below 16MB. When this area is reserved, it cannot be cached.

### \*\* VGA Setting \*\*

#### ► On-Chip Frame Buffer Size

Frame Buffer is the video memory that stores data for video display (frame). This field is used to determine the memory size for Frame Buffer. Larger frame buffer size increases video performance.

#### ► DVMT Mode

Intel's Dynamic Video Memory Technology (DVMT) allows the system to dynamically allocate memory resources according to the demands of the system at any point in time. The key idea in DVMT is to improve the efficiency of the memory allocated to either system or graphics processor.

It is recommended that you set this BIOS feature to DVMT Mode for maximum performance. Setting it to DVMT Mode ensures that system memory is dynamically allocated for optimal balance between graphics and system performance.

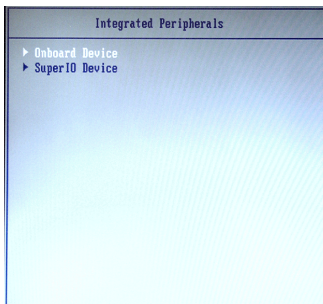
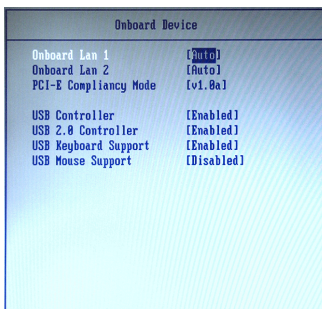
#### ► DVMT/FIXED Memory Size

When set to DVMT/FIXED Mode, the graphics driver will allocate a fixed amount

of memory as dedicated graphics memory, as well as allow more system memory to be dynamically allocated between the graphics processor and the operating system.

► **Init Display First**

This item specifies which VGA card is your primary graphics adapter.

**► Integrated Peripherals****► Onboard Device****► Onboard LAN 1 / 2**

These settings disable/enable the onboard Ethernet controller.

**► PCI-E Compliancy Mode**

This setting specifies the compliancy mode of the PCI-Express ports (1.0 or 1.0a).

► **USB Controller**

This setting is used to enable/disable the onboard USB controller.

► **USB 2.0 Controller**

This setting is used to enable/disable the onboard USB 2.0 controller.

► **USB Keyboard/Mouse Support**

Set to [Enabled] if your need to use a USB-interfaced keyboard/mouse in the operating system that does not support or have any USB driver installed, such as DOS and SCO Unix.

► **Super IO Device**

SuperIO Device	
Onboard Serial Port 1	[3F8/IRQ4]
Onboard Serial Port 2	[2F8/IRQ3]
Onboard Parallel Port	[378/IRQ7]
Parallel Port Mode	[SPP]
× EPP Mode Select	EPP1.7
× ECP Mode Use DMA	3
PHROM After PHR-Fail	[Off]

► **Onboard Serial Port 1 / 2**

Select an address and corresponding interrupt for Serial Port 1/2.

► **Onboard Parallel Port**

This setting specifies the I/O port address and IRQ of the onboard parallel port.

► **Parallel Port Mode**

[SPP]	Standard Parallel Port
[EPP]	Enhanced Parallel Port
[ECP]	Extended Capability Port
[ECP+EPP]	Extended Capability Port + Enhanced Parallel Port

To operate the onboard parallel port as Standard Parallel Port only, choose [SPP]. To operate the onboard parallel port in the EPP mode simultaneously, choose [EPP]. By choosing [ECP], the onboard parallel port will operate in

ECP mode only. Choosing [ECP + EPP] will allow the onboard parallel port to support both the ECP and EPP modes simultaneously.

► **EPP Mode Select**

Select EPP port type 1.7 or 1.9, as required by your parallel peripheral.

► **ECP Mode Use DMA**

The ECP mode has to use the DMA channel, so choose the onboard parallel port with the ECP feature. After selecting it, the following message will appear: "ECP Mode Use DMA." At this time, the user can choose between DMA channel [3] or [1].

► **PWRON After PWR-Fail**

This item specifies whether your system will reboot after a power failure or interrupt occurs. Available settings are:

- |              |   |
|--------------|---|
| [Off]        | Leaves the computer in the power off state.                                   |
| [On]         | Leaves the computer in the power on state.                                    |
| [Former-sts] | Restores the system to the status before power failure or interrupt occurred. |

## ► Power Management Setup

Power Management Setup	
ACPI Function	[Enabled]
ACPI Suspend Type	[S1(POS)]
Power Management	[User Define]
Video Off Method	[DPMS]
Video Off In Suspend	[Yes]
Suspend Type	[Stop Grant]
Suspend Mode	[Disabled]
HDD Power Down	[Disabled]
Soft-Off by PWR-BTN	[Instant-Off]
Wake-Up by PCI card	[Disabled]
Resume by Alarm	[Disabled]
x Date(of Month) Alarm	0
x Time(hh:mm:ss) Alarm	0 : 0 : 0

### ► ACPI Function

This item is to activate the ACPI (Advanced Configuration and Power Management Interface) Function. If your operating system is ACPI-aware, such as Windows 98SE/2000/ME, select [Enabled].

### ► ACPI Suspend Type

This item specifies the power saving modes for ACPI function. If your operating system supports ACPI, such as Windows 98SE, Windows ME and Windows 2000, you can choose to enter the Standby mode in S1 (POS) or S3 (STR) fashion through the setting of this field. Options are:

[S1(POS)] The S1 sleep mode is a low power state. In this state, no system context is lost (CPU or chipset) and hardware maintains all system context.

[S3(STR)] The S3 sleep mode is a lower power state where the information of system configuration and open applications/files is saved to main memory that remains powered while most other hardware components turn off to save energy. The information stored in memory will be used to restore the system when a "wake up" event occurs.

### ► Power Management

This item is used to select the degree (or type) of power saving and is related to these modes: **Suspend Mode** and **HDD Power Down**. There are three options for power management:

[Min Saving]	Minimum Power Management. Suspend Mode=1 Hour
[Max Saving]	Maximum Power Management. Suspend Mode=1 Min
[User Define]	Allows end users to configure each mode separately.

▶ **Video Off Method**

This setting determines the manner in which the monitor is blanked.

▶ **Video Off In Suspend**

This option enables the monitor to be turned off during the suspend mode.

▶ **Suspend Type**

This item allows you to select the suspend type for system power management.

▶ **Suspend Mode**

After the selected period of system inactivity, all devices except the CPU shut off.

▶ **HDD Power Down**

If HDD activity is not detected for the length of time specified in this field, the hard disk drive will be powered down while all other devices remain active.

▶ **Soft-Off by PWR-BTTN**

This feature allows users to configure the power button function. Settings are:

- [Instant-Off] The power button functions as a normal power-on/-off button.
- [Delay 4 Sec.] When you press the power button, the computer enters the suspend/sleep mode, but if the button is pressed for more than four seconds, the computer is turned off.

▶ **Wake-Up By PCI Card**

When setting to [Enabled], this setting allows your system to be awakened from the power saving modes through any event on PCI PME (Power Management Event).

▶ **Resume By Alarm**

When [Enabled], you can set the date and time at which the RTC (real-time clock) alarm awakens the system from suspend mode.

▶ **Date (of Month) Alarm**

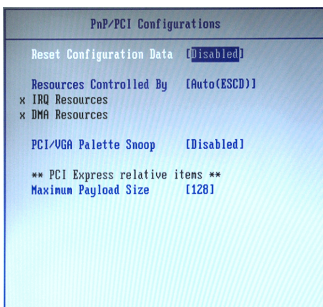
When **Resume By Alarm** is set to [Enabled], the field specifies the month for **Resume By Alarm**.

▶ **Time (hh:mm:ss) Alarm**

You can choose what hour, minute and second the system will boot up.



## ► PnP/PCI Configurations



### ► Reset Configuration Data

The ESCD (Extended System Configuration Data) NVRAM (Non-volatile Random Access Memory) is where the BIOS stores resource information for both PNP and non-PNP devices in a bit string format. When the item is set to [Enabled], the system will reset ESCD NVRAM right after the system is booted up and then set the setting of the item back to [Disabled] automatically.

### ► Resources Controlled By

The Award Plug and Play BIOS has the capacity to automatically configure all of the boot and Plug and Play compatible devices. However, this capability means absolutely nothing unless you are using a Plug and Play operating system such as Windows® 98/2000. If you set this field to [Manual], choose specific resources by going into each sub-menu that follows this field.

### ► IRQ/DMA Resources

The items are adjustable only when **Resources Controlled By** is set to [Manual].

Press <Enter> and you will enter the sub-menu of the items. IRQ/DMA Resources list available IRQs/DMA for users to set each IRQ/DMA a type depending on the type of device using the IRQ/DMA.

### ► PCI/VGA Palette Snoop

When set to [Enabled], multiple VGA devices operating on different buses can handle data from the CPU on each set of palette registers on every video device. Bit 5 of the command register in the PCI device configuration space is the VGA Palette Snoop bit (0 is disabled). For example, if there are two VGA devices in the computer (one PCI and one ISA) and the:

<b>VGA Palette Snoop Bit Setting</b>	<b>Action</b>
<i>Disabled</i>	Data read or written by the CPU is only directed to the PCI VGA device's palette registers.
<i>Enabled</i>	Data read or written by the CPU is directed to both the PCI VGA device's palette registers and the ISA VGA device's palette registers, permitting the palette registers of both VGA devices to be identical.

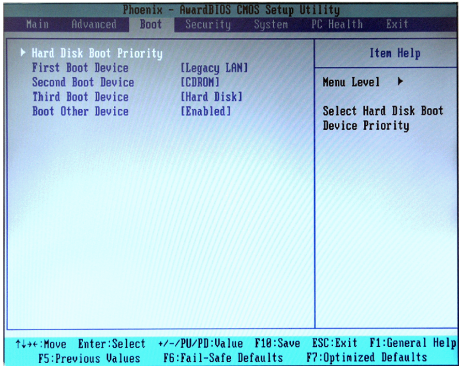
The setting must be set to [Enabled] if any ISA bus adapter in the system requires VGA palette snooping.

**\*\* PCI Express Relative Items \*\***

► **Maximum Payload Size**

This setting sets the maximum TLP payload size for the PCI Express devices. The unit is byte.

## Boot



### ▶ Hard Disk Boot Priority

This setting allows users to set the boot priority of the specified hard disk devices. First press <Enter> to enter the sub-menu. Then you may use the arrow keys (↑↓) to select the desired device, then press <+>, <-> or <PageUp>, <PageDown> key to move it up/down in the priority list.

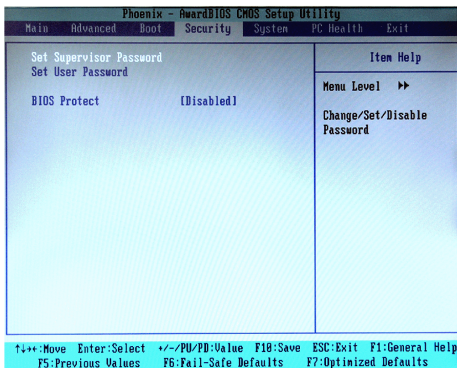
### ▶ First / Second / Third Boot Device

The items allow you to set the sequence of boot devices where BIOS attempts to load the disk operating system.

### ▶ Boot Other Device

Setting the option to [Enabled] allows the system to try to boot from other device if the system fails to boot from the first/second/third boot device.

## Security



### ► Set Supervisor Password

Supervisor Password controls access to the BIOS Setup utility.

### ► Set User Password

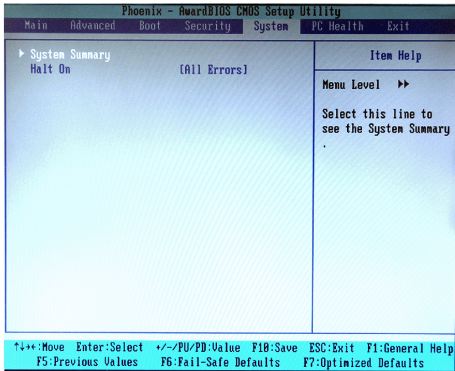
User Password controls access to the system at boot.

### ► BIOS Protect

This function protects the BIOS from accidental corruption by unauthorized users or computer viruses. When enabled, the BIOS' data cannot be changed when attempting to update the BIOS with a Flash utility. To successfully update the BIOS, you'll need to disable this Flash BIOS Protection function.

You should enable this function at all times. The only time when you need to disable it is when you want to update the BIOS. After updating the BIOS, you should immediately re-enable it to protect it against viruses.

## System



### ► System Summary

These items show the hardware specifications of your system. Read only.

System Summary	
Machine Type/Model	MS-9643
Processor	Genuine Intel(R)
Processor Speed	2.65 GHz
System Memory Type	DDR2 RAM
Video Controller	Intel(r)Broadwater-G
BIOS Date	Oct 24 2006
BIOS Version	V1.0B7
LAN1 MAC Address	00-16-17-A5-DF-97
LAN2 MAC Address	-----

**► Halt On**

The setting determines whether the system will stop if an error is detected at boot. When the system stops for the errors preset, it will halt on for 15 seconds and then automatically resume its operation. Available options are:

- |                     |   |
|---------------------|---|
| [All Errors]        | The system stops when any error is detected.    |
| [No Errors]         | The system doesn't stop for any detected error. |
| [All, But Keyboard] | The system doesn't stop for a keyboard error.   |

## PC Health

Phoenix - AwardBIOS CMOS Setup Utility						
Main	Advanced	Boot	Security	System	PC Health	Exit
Smart CPUFan Temperature	[58°C/122°F]	Item Help				
CPUFan Tolerance Value	[ 2 ]	Menu Level →				
Current System Temp	48°C/ 104°F					
Current CPU Temperature	45°C/ 113°F					
CPU Fan Speed	4354 RPM					
Vcore	1.36V					
+12V	12.19V					
Vcc_DDR	1.64V					
Vcc5	5.14V					
V_1p5	1.52V					
VCC3 (V)	3.24V					
VBAT (V)	3.15V					
3VSB (V)	3.23V					
↑↓:Move Enter:Select +/~:PU/PD:Value F10:Save ESC:Exit F1:General Help						
F5:Previous Values F6:Fail-Safe Defaults F7:Optimized Defaults						

### ► Smart CPUFan Temperature

Select a temperature setting here, and if the temperature of the CPU climbs up to the selected temperature setting, the system will automatically increase the speed of the CPU fan to cool down the overheated CPU.

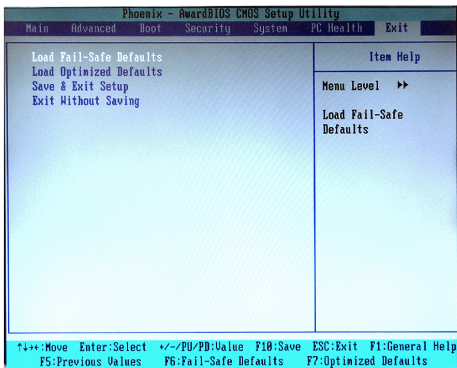
### ► CPUFan Tolerance Value

You can select a fan tolerance value here for the specific range for the **Smart CPUFan Temperature** item. If the current temperatures of the fans reach the maximum threshold (the temperatures set in the **Smart CPUFan Temperature** plus the tolerance values you set here), the fans will speed up for cooling down. On the contrary if the current temperatures reach the minimum threshold (the set temperatures minus the tolerance values), the fans will slow down to keep the temperatures stable.

### ► Current System Temp, Current CPU Temperature, CPU Fan Speed, Vcore, +12V, Vcc\_DDR, Vcc5, V\_1p5, VCC3 (V), VBAT (V), 3VSB (V)

These items display the current status of all of the monitored hardware devices/ components such as CPU voltage, temperatures and all fans' speeds.

## Exit



### ► Load Fail-Safe Defaults

Use this menu to load the default values set by the BIOS vendor for stable system performance.

### ► Load Optimized Defaults

Use this menu to load the default values set by the mainboard manufacturer specifically for optimal performance of the mainboard.

### ► Save & Exit Setup

Save changes to CMOS and exit setup.

### ► Exit Without Saving

Abandon all changes and exit setup.



Any advice or comments about our products and service, or anything we can help you with please don't hesitate to contact with us. We will do our best to support you for your products, projects and business.

### **Global American Inc.**

Address: 17 Hampshire Drive  
Hudson, NH 03051

TEL: Toll Free (U.S. Only) 800-833-8999  
(603)886-3900

FAX: (603)886-4545

Website: <http://www.globalamericaninc.com>

E-Mail: [salesinfo@globalamericaninc.com](mailto:salesinfo@globalamericaninc.com)

