



integration with integrity

User's Manual

Mini-PCI Capture Card 3907710

Version 1.0, June 2007



---

## **Copyrights**

This manual is copyrighted and all rights are reserved. It does not allow any non authorization in copied, photocopied, translated or reproduced to any electronic or machine readable form in whole or in part without prior written consent from the manufacturer.

In general, the manufacturer will not be liable for any direct, indirect, special, incidental or consequential damages arising from the use of inability to use the product or documentation, even if advised of the possibility of such damages. The manufacturer keeps the rights in the subject to change the contents of this manual without prior notices in order to improve the function design, performance, quality and reliability. The author assumes no responsibility for any errors or omissions, which may appear in this manual, nor does it make a commitment to update the information contained herein.

## **Trademarks**

Intel is a registered trademark of Intel Corporation.

Award is a registered trademark of Award Software, Inc.

All other trademarks, products and or product's name mentioned herein are mentioned for identification purposes only, and may be trademarks and/or registered trademarks of their respective companies or owners.

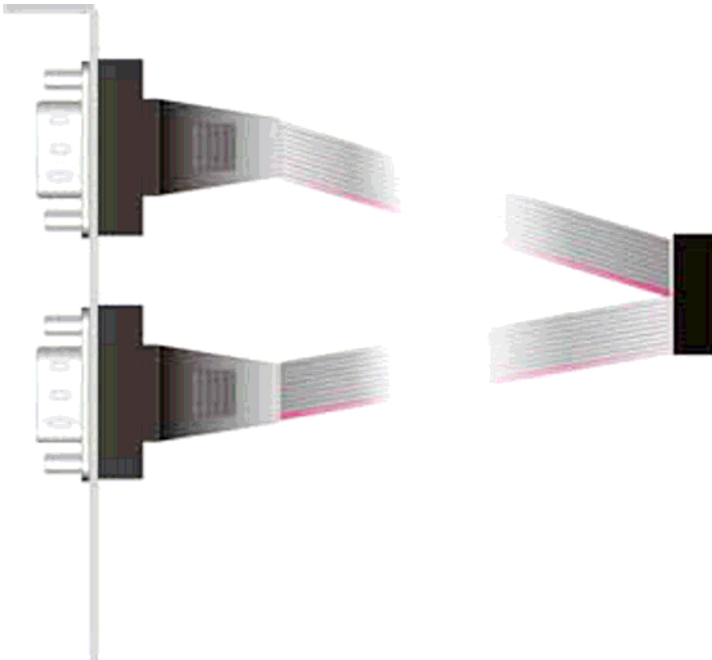
---

## Packing List:

### Hardware:

3907710 Mini-PCI Capture Card x1

Cable kit:



**Dual D-SUB 9 Cable x 1**



**Internal audio and video Cable x 2**

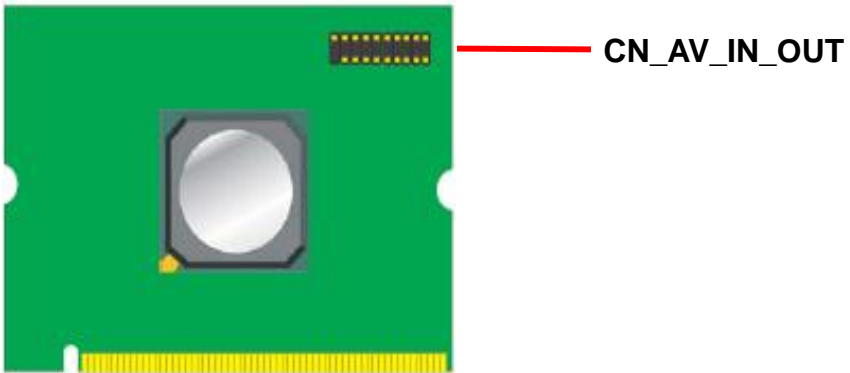
**CD Content:**

**Drivers & User's Manual**

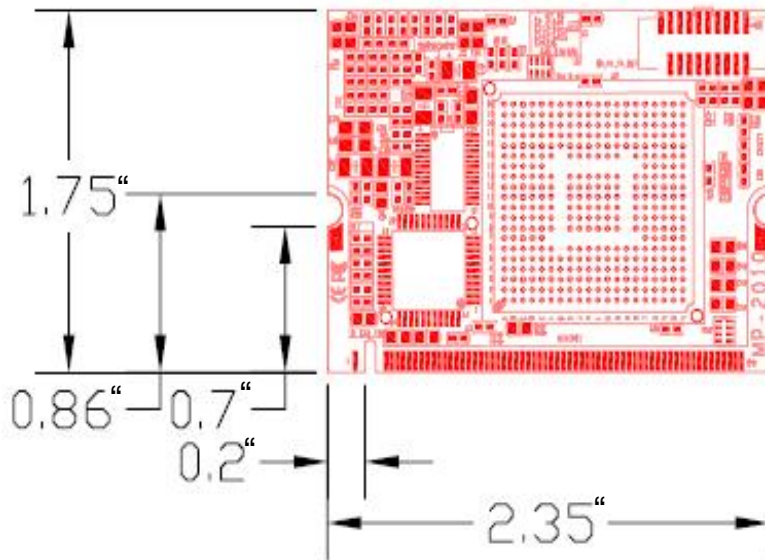
## 1.0 <Product Specification>

General Specification	
Form Factor	Mini-PCI Type IIIB with 124-pin interface
Controller	VWeb2010
Accessories	1 x Dual D-SUB 9 Cable 2 x audio and video Cable
Features	Real-time MPEG-1, -2 and -4 audio/video/system CODEC <i>(Beware of the temperature of the heat sink)</i>

### 1.1 <Component Placement>



## 1.2 <Mechanical Drawing>



## 1.3 <Connector Reference>

Connector: CN\_AV\_IN\_OUT

Type: 20-pin (10x2) header



	Description	Pin	Description
1	Ground	2	Composite_OUT
3	Ground	4	Y_OUT
5	Ground	6	C_OUT
7	Ground	8	LEFT_OUT
9	RIGHT_OUT	10	N/C
11	Ground	12	Composite_IN
13	Ground	14	Y_IN
15	Ground	16	C_IN
17	Ground	18	LEFT_IN
19	RIGHT_IN	20	N/C

## 1.4 < audio and video Connect >



← **Audio Connect**



← **Composite Connect**



← **S-Video Connect**



---

Any advice or comments about our products and service, or anything we can help you with please don't hesitate to contact us. We will do our best to support your products, projects and business.



Address: Global American, Inc.  
17 Hampshire Drive  
Hudson, NH 03051

Telephone: Toll Free (U.S. Only) 800-833-8999  
(603)886-3900

FAX: (603)886-4545

Website: <http://www.globalamericaninc.com>  
Support: Technical Support at Global American

