

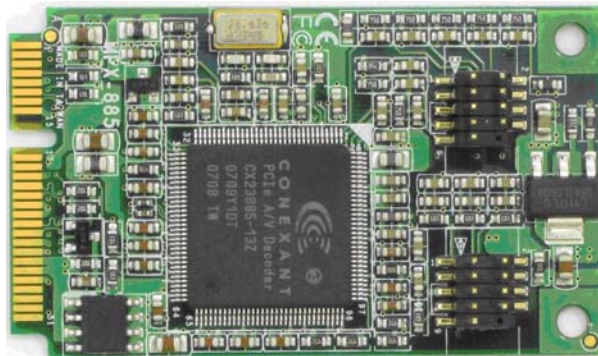


# 3907717

---

User's Manual

Edition 1.2  
2009/10/12



### **Copyright**

Copyright 2009 all rights reserved. This document is copyrighted and all rights are reserved. The information in this document is subject to change without prior notice to make improvements to the products.

This document contains proprietary information and protected by copyright. No part of this document may be reproduced, copied, or translated in any form or any means without prior written permission of the manufacturer.

All trademarks and/or registered trademarks contains in this document are property of their respective owners.

### **Disclaimer**

The company shall not be liable for any incidental or consequential damages resulting from the performance or use of this product.

The company does not issue a warranty of any kind, express or implied, including without limitation implied warranties of merchantability or fitness for a particular purpose.

The company has the right to revise the manual or include changes in the specifications of the product described within it at any time without notice and without obligation to notify any person of such revision or changes.

### **Trademark**

All trademarks are the property of their respective holders.

## Packing List:

### Hardware:

3907717 Mini PCI Express Capture Card x1

Cable kit:

### Video Cable



4-ch BNC Cable x 1



DB9 Cable x 1

### Audio Cable (option)



Audio Cable x 1 (option)



DB9 Cable x 1 (option)

## Video Cable (option)



Dual YPbPR + Dual Composite Cable x 1 (option)



4-ch S-Video Cable x 1 (option)



8-ch BNC Cable x 1 (option)



8-ch Composite Cable x 1 (option)

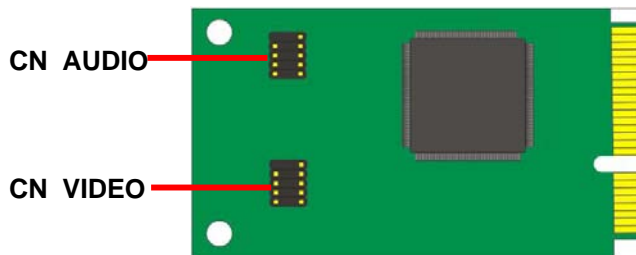
## CD Content:

Drivers & User's Manual

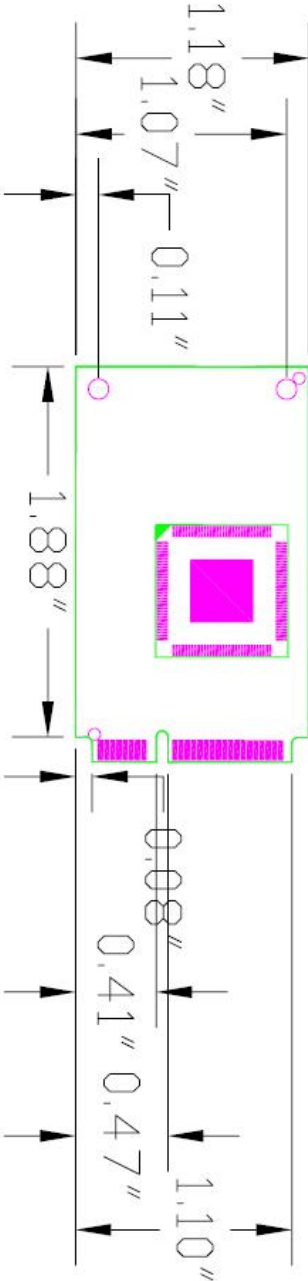
## 1.0 <Product Specification>

General Specification	
Form Factor	PCI Express mini card
Controller	One CX23885 chip onboard
Accessories	1 x 10-pin header to 1 x D-sub 9 Cable 1 x D-sub 9 to 4 x BNC connector Cable 1 x 10-pin header to 1 x D-sub 9 Cable(option)-Audio 1 x D-sub 9 to 4 channel Audio Cable (option)-Audio 1 x D-sub 9 to 4 x S-Video Cable(option)-4 x S-Video 1 x D-sub 9 to 2 x YPbPr & 2 x Composite Cable(option)--- 2 x YPbPr + 2 x Composite 1 x D-sub 9 to 8 x Composite Cable( option)-8 x Composite 1 x D-sub 9 to 8 x BNC connector Cable(option)-8 x Video input
Features	4 channel video inputs share with 3C ops NTSC: 720 x 480 @ 30 FPS PAL: 720 x 576 @ 25 FPS Support NTSC/PAL video decoding Support image capture resolutions up to 768 x 576, 768 x 288, 352 x 288 (PAL) 720 x 480, 720 x 240 , 320 x 240 (NTSC)
Dimensions (L x W)	51mm x 30mm

## 1.1 <Component Placement>



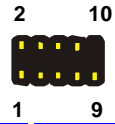
# 1.2 <Mechanical Drawing>



## 1.3 <Connector Reference>

Connector: CN\_VIDEO

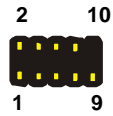
Type: 10-pin (5x2) header



Pin	Description	Pin	Description
1	VIDEO1	2	VIDEO2
3	VIDEO3	4	VIDEO4
5	Ground	6	VIDEO5
7	VIDEO6	8	VIDEO7
9	VIDEO8	10	N/C

Connector: CN\_AUDIO

Type: 10-pin (5x2) header



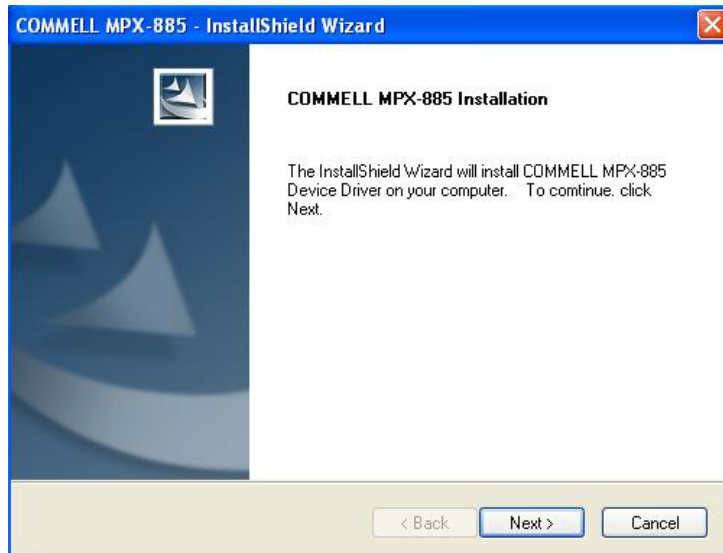
Pin	Description	Pin	Description
1	VL1	2	VL2
3	N/C	4	N/C
5	GND	6	VR1
7	VR2	8	N/C
9	N/C		

## 1.4 <Driver Setting>

1. Insert the driver CD into your system's CD-ROM to Set up 3907717 [Setup 3907717\\_20091012.exe](#).

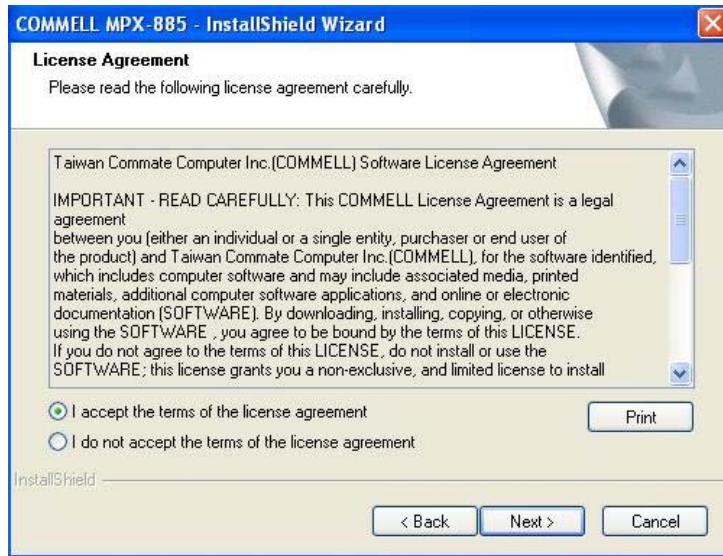
(E:/Driver/3907717/SDK(1.1)/Setup 3907717\_20091012.exe)

Please select "Next" to continue.

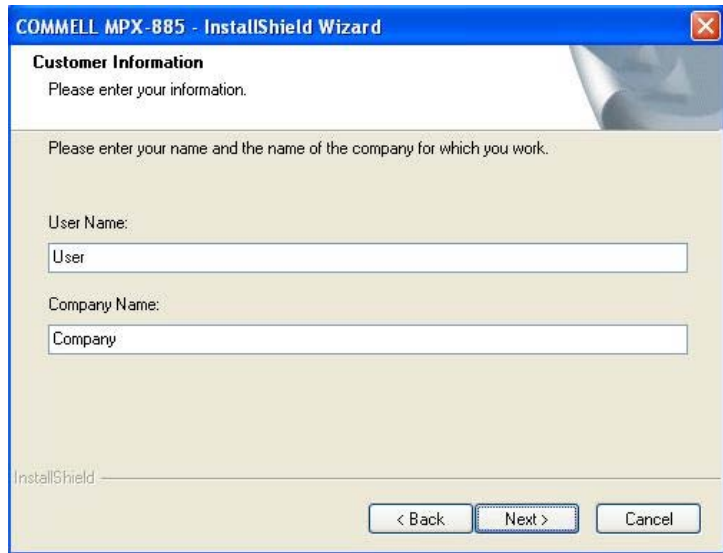




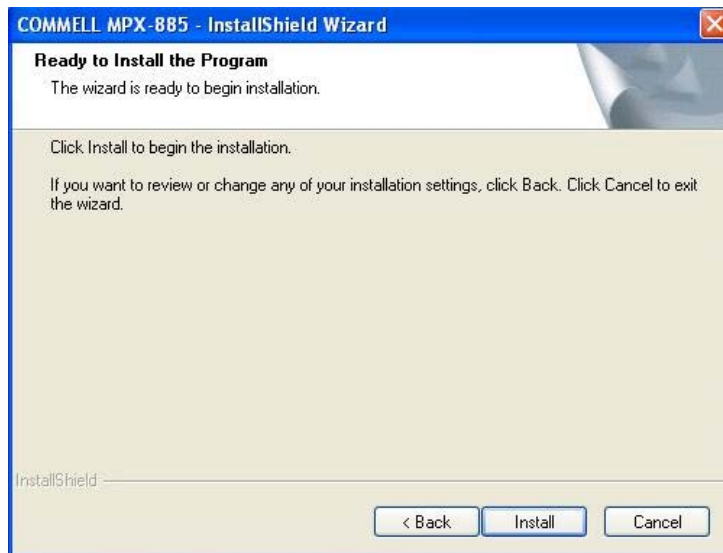
2. Please read the following License Agreement. Press the Page Down key to see the rest of agreement and click “Next” to continue the installation.



3. Please select fill in your User Name & Company Name. Then, click “Next”.



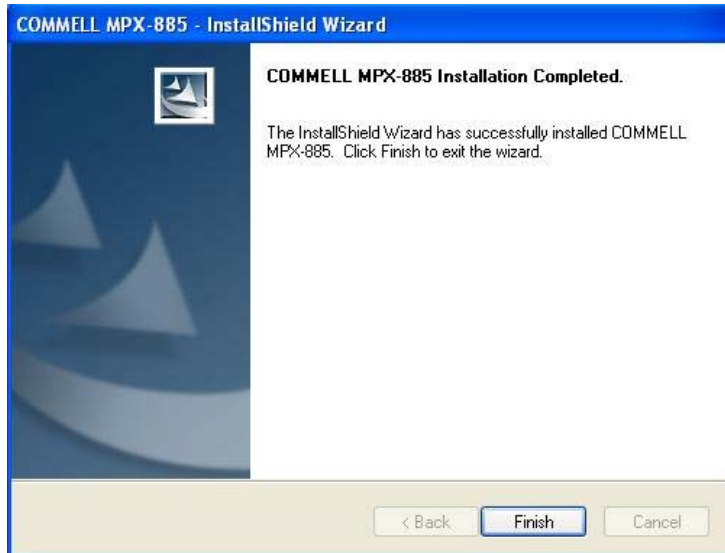
4. Please select "Install" in this page.



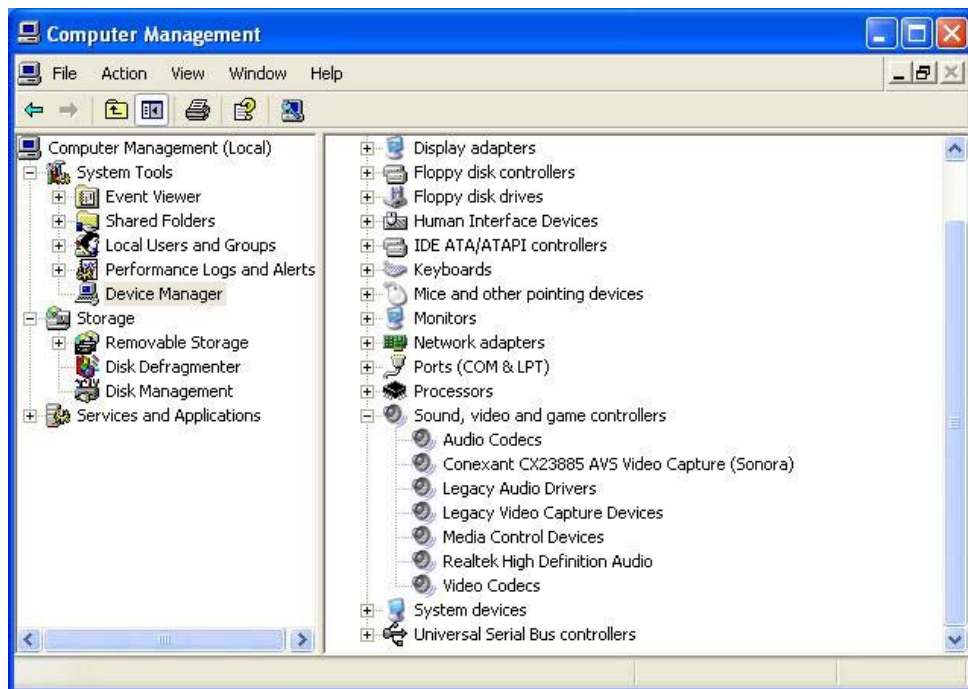
5. Please Click "Continue Anyway", when you see the following message.



**6. Please click “Finish” to complete the installation.**



7. After driver install, please enter Device Manager then select **Conexant CX23885 AVS Video Capture(Sonora)** press properties.



## 1.5 <Sample Program>

When you completed hardware & software installation, you can use COMMELL "Launch COMMELLDVC App" sample program to test.

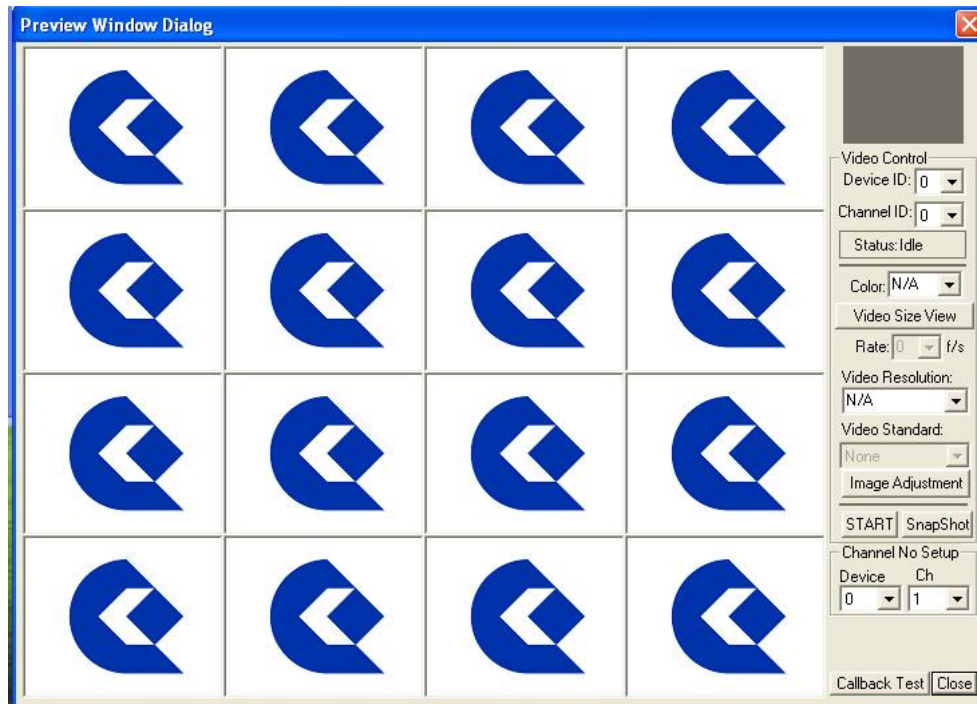
You can find Launch COMMELLDVC App.exe on desktop.



Please double –click "Launch COMMELLDVC App.exe", It'll pops up as following. Then Please Push "Preview" on the left-upper Menu.



You'll get the program interface as following.



## Explanation of Sample program function



**Device ID:**

It is mean CX23885 Chipset.

**Channel ID:**

Support Video input per device.

**Snapshot:**

Catch the image on working channel.

**Callback Test:**

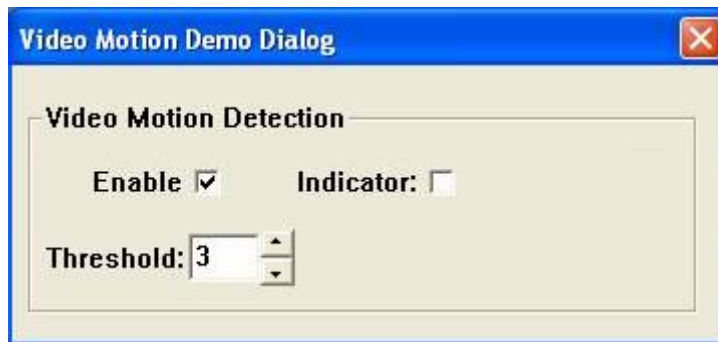
Catch the series image on working channel

**Note:**

Every channel works separately, when you want to change any setting, please stop all channels which are working.

## <Video Motion>

Please choose "Video Motion", then you can see program interface as following.



**Enable:**

If user "check" this box, it will enable video motion detection.

**Indicator:**

If this box is checked, it will show red spots as an motion indication, when the video motion is been detected.

**Threshold:**

Select motion detection sensitivity level, the number smaller, the sensitivity stronger.



Any advice or comments about our products and service, or anything we can help you with please don't hesitate to contact with us. We will do our best to support you for your products, projects and business.

### **Global American Inc.**

Address: 17 Hampshire Drive  
Hudson, NH 03051

TEL: Toll Free (U.S. Only) 800-833-8999  
(603)886-3900

FAX: (603)886-4545

Website: <http://www.globalamericaninc.com>

E-Mail: [salesinfo@globalamericaninc.com](mailto:salesinfo@globalamericaninc.com)

