



*integration with integrity*

**3907740 User's Manual**  
**Mini-PCI Video Capture Module**  
**Version 1.0**



---

## **Copyrights**

This document is copyrighted and all rights are reserved. It does not allow any non authorization in copied, photocopied, translated or reproduced to any electronic or machine readable form in whole or in part without prior written consent from the manufacturer.

In general, the manufacturer will not be liable for any direct, indirect, special, incidental or consequential damages arising from the use of inability to use the product or documentation, even if advised of the possibility of such damages. The manufacturer keeps the rights in the subject to change the contents of this document without prior notices in order to improve the function design, performance, quality and reliability. The author assumes no responsibility for any errors or omissions, which may appear in this document, nor does it make a commitment to update the information contained herein.

## **Trademarks**

Intel is a registered trademark of Intel Corporation.

Award is a registered trademark of Award Software, Inc.

All other trademarks, products and or product's name mentioned herein are mentioned for identification purposes only, and may be trademarks and/or registered trademarks of their respective companies or owners.

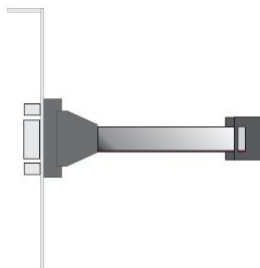
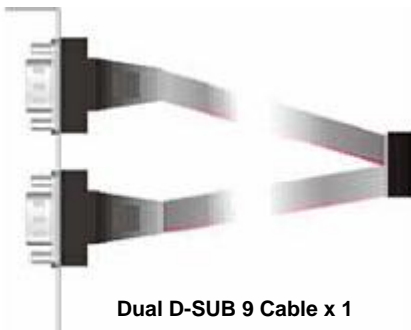
---

## Packing List:

**Hardware:** 3907740

Mini-PCI Capture Card x1

**Cable kit:**



**CD Content:**

Drivers & User's Manual

# 1.0 <Product Specification>

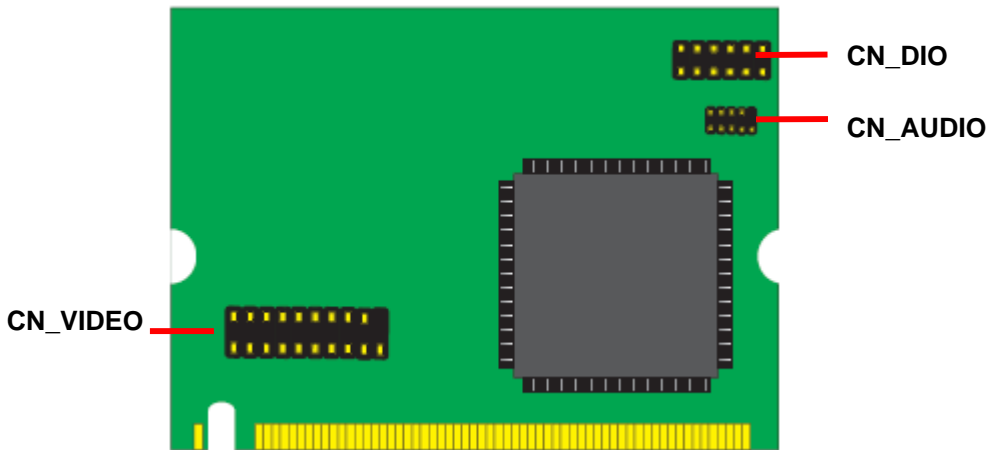
<b>General Specification</b>	
<b>Form Factor</b>	Mini- PCI form factor Type-III B with 124-pin interface
<b>Controller</b>	One MV9200 chip onboard
<b>Accessories</b>	1 x 20-pin header to 2 x D-sub 9 Cable 1 x 10-pin header to 1 x D-sub 9 Cable 2 x D-sub 9 to 8 x BNC connector Cable 1 x D-sub 9 to 2 channel Audio Cable
<b>Features</b>	16 channel video inputs share with 120 fps Support NTSC/PAL video decoding Support image capture resolutions up to 768 x 576 (PAL) 720 x 480 (NTSC)
<b>Dimensions (L x W)</b>	60mm x 45mm
<b>Ordering Code</b>	
<b>3907740</b>	16 ch video and 2 ch audio input with SDK provided
<b>3907740A</b>	16 ch video and 2 ch audio input with Scode DVR program

## Recording & monitor

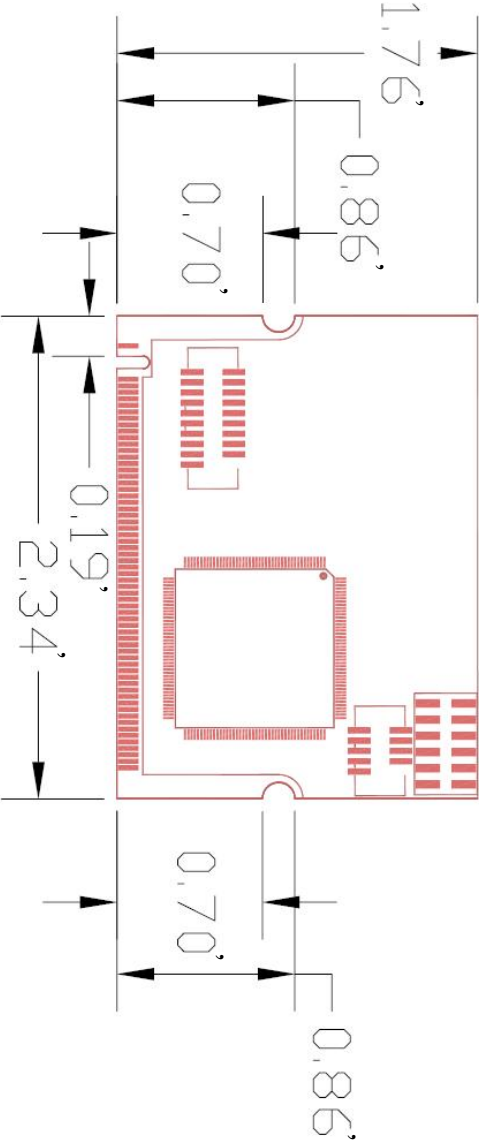
<b>Input</b>	<b>Resolution</b>	<b>Frame rate</b>
4 Channel	D1	15 fps/per channel
	CIF	30 fps/per channel
8 Channel	D1	7.5 fps/per channel
	CIF	15 fps/per channel
12 Channel	D1	5 fps/per channel
	CIF	10 fps/per channel
16 Channel	D1	3.75 fps/per channel
	CIF	7.5 fps/per channel

---

## 1.1 <Component Placement>



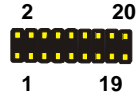
# 1.2 <Mechanical Drawing>



## 1.3 <Connector Reference>

Connector: CN\_VIDEO

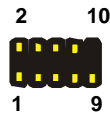
Type: 20-pin (10x2) header



Pin	Description	Pin	Description
1	VIEDO1	2	VIDEO2
3	VIEDO3	4	VIEDO4
5	Ground	6	VIEDO5
7	VIEDO6	8	VIEDO7
9	VIEDO8	10	N/C
11	VIEDO9	12	VIEDO10
13	VIEDO11	14	VIEDO12
15	Ground	16	VIEDO13
17	VIEDO14	18	VIEDO15
19	VIEDO16	20	N/C

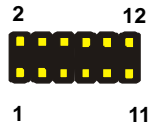
Connector: CN\_AUDIO

Type: 10-pin (5x2) header



Pin	Description	Pin	Description
1	CH1	2	CH2
3	N/C	4	N/C
5	GND	6	N/C
7	N/C	8	N/C
9	N/C		

**Connector: CN\_DIO**  
**Type: 12-pin (6x2) header**



Pin	Description	Pin	Description
1	GND	2	GND
3	IO1	4	IO5
5	IO2	6	IO6
7	IO3	8	IO7
9	IO4	10	IO8
11	+5V	12	+3.3V

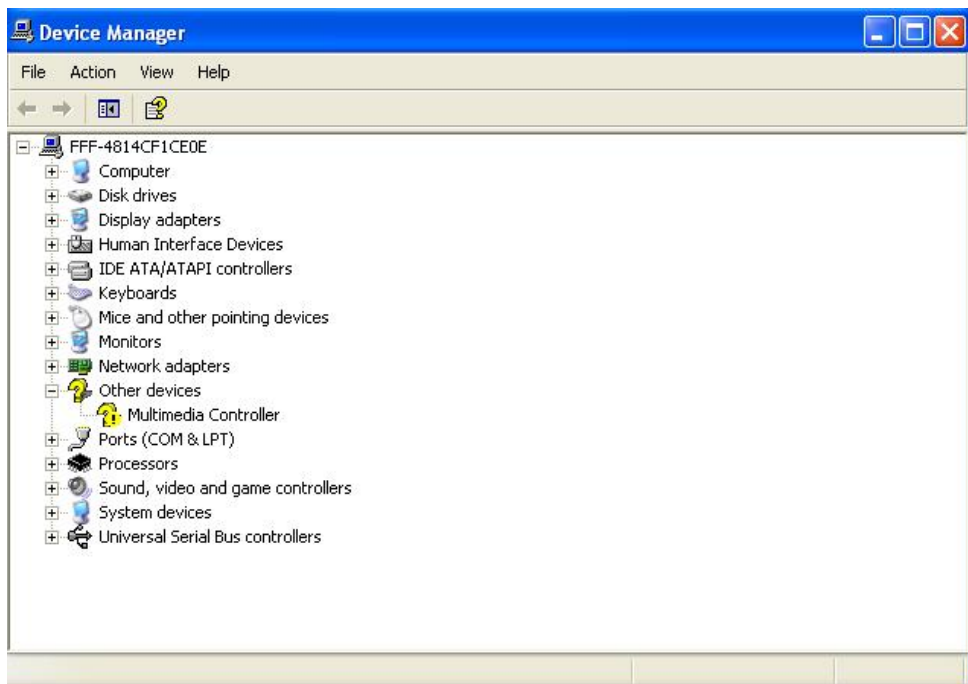


# 1.4 <Driver Setting>

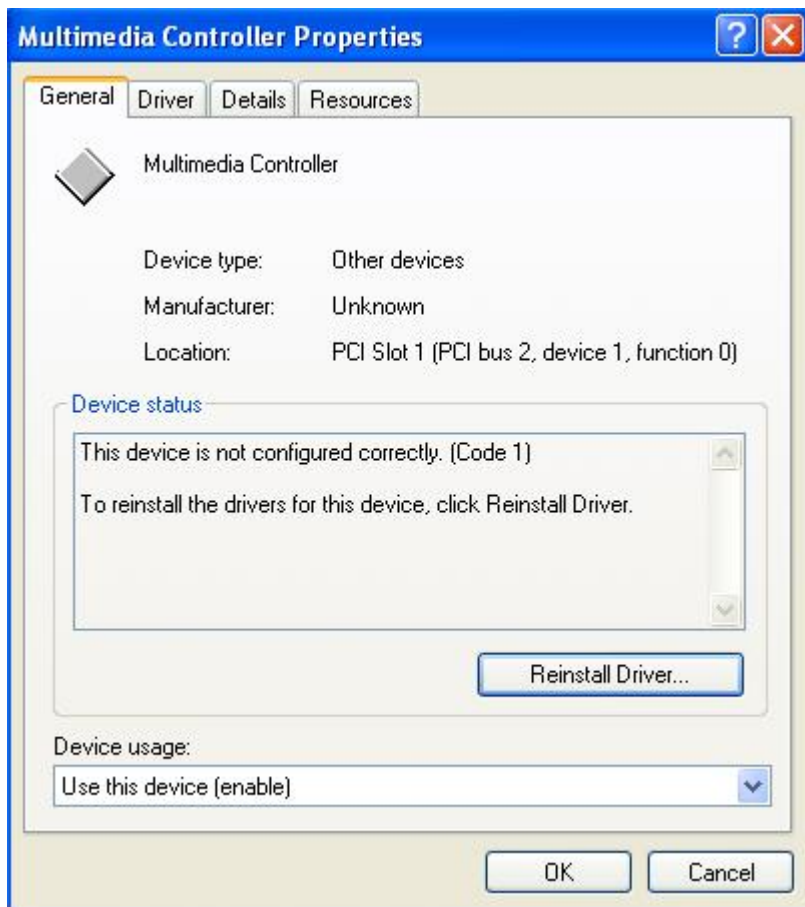
## 1. Please choose **Device Manager**



## 2. Then you can see other devices



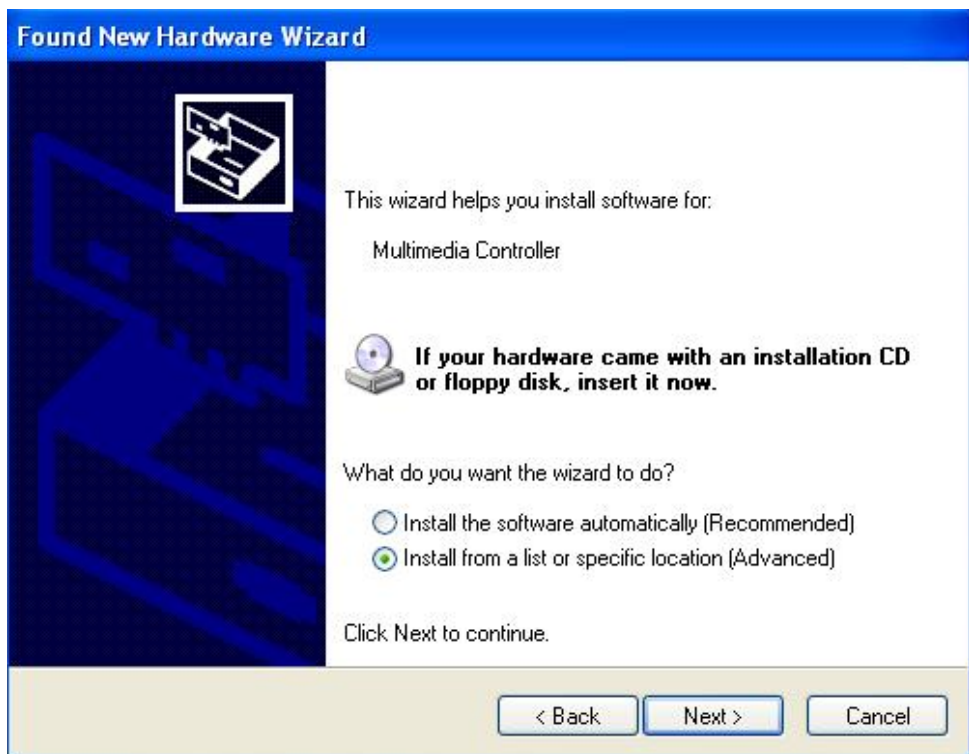
### 3. Please choose **Multimedia Controller** then press **Reinstall Driver**



#### 4. Please choose **NO** , not this time press next



## 5. Please choose **Install from a list on specific Location**



---

Any advice or comments about our products and service, or anything we can help you with please don't hesitate to contact with us. We will do our best to support your products, projects and business.



Address: Global American, Inc.  
17 Hampshire Drive  
Hudson, NH 03051

Telephone: Toll Free U.S. Only (800) 833-8999  
(603) 886-3900

FAX: (603) 886-4545

Website: <http://www.globalamericaninc.com>

Support: Technical Support at Global American

---