



integration with integrity

3907750 User's Manual

Mini-PCI Video & Audio Capture Module

Version 1.0



Copyrights

This document is copyrighted and all rights are reserved. It does not allow any non authorization in copied, photocopied, translated or reproduced to any electronic or machine readable form in whole or in part without prior written consent from the manufacturer.

In general, the manufacturer will not be liable for any direct, indirect, special, incidental or consequential damages arising from the use of inability to use the product or documentation, even if advised of the possibility of such damages. The manufacturer keeps the rights in the subject to change the contents of this document without prior notices in order to improve the function design, performance, quality and reliability. The author assumes no responsibility for any errors or omissions, which may appear in this document, nor does it make a commitment to update the information contained herein.

Trademarks

Intel is a registered trademark of Intel Corporation.

Award is a registered trademark of Award Software, Inc.

All other trademarks, products and or product's name mentioned herein are mentioned for identification purposes only, and may be trademarks and/or registered trademarks of their respective companies or owners.



Packing List:

Hardware:

3907750 Mini-PCI Capture Card x1

Cable kit:

D-SUB 9 Cable x 2



4 Channel video and audio input Cable x 1



video and audio output Cable x 1



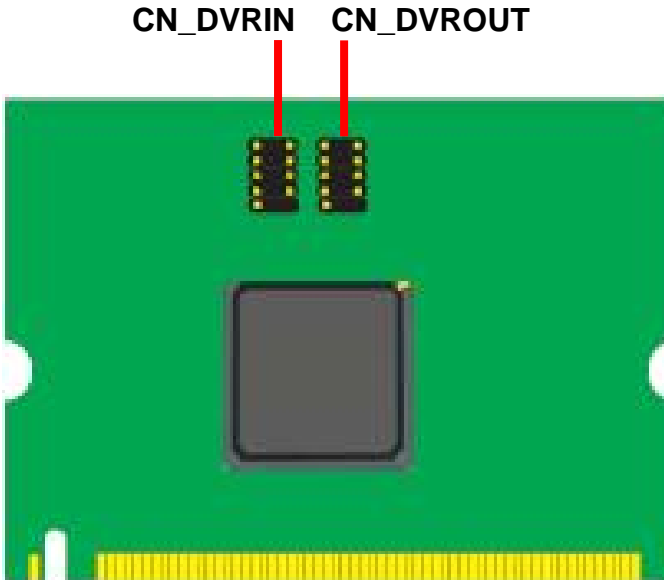
CD Content:

Drivers & User's Manual

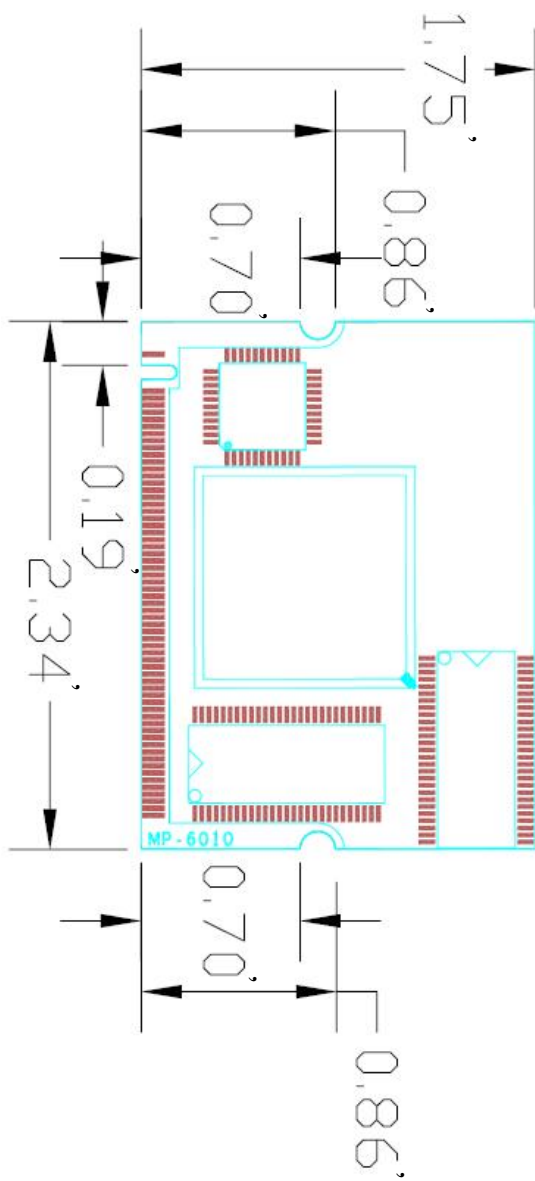
1.0 <Product Specification>

General Specification	
Form Factor	Mini-PCI Type III B with 124-pin interface
Video Decode Chipset	Softlogic solo6010-4
Accessories	2 x 10-pin header to D-SUB 9 Cable 1 x 4 Channel video and audio input Cable 1 x video and audio output Cable
Features	MPEG4 hardware compression Video Capture Card 4 Channel Video & Audio inputs MAX resolution: NTSC at 704*480 PAL at 704*576

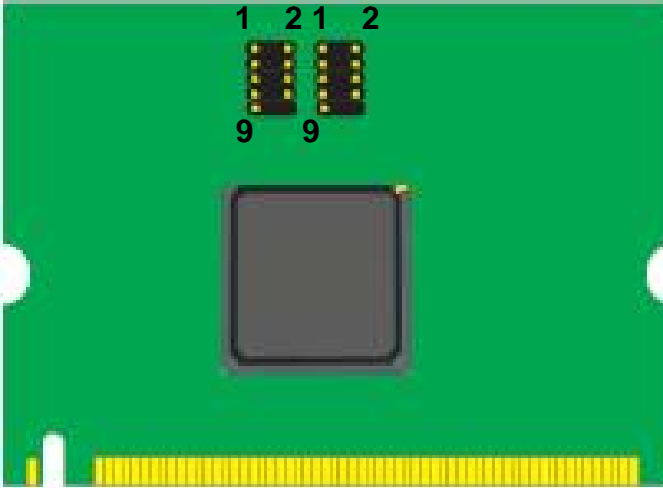
1.1 <Component Placement>



1.2 <Mechanical Drawing>



1.3 <Connector Reference>



Connector: CN_DVRIN & CN_DVROUT
Type: 10-pin (5x2) header(1.27mm) X 2

Pin	Description	Pin	Description
1	P_VI_CH1	2	P_VI_CH2
3	P_VI_CH3	4	P_VI_CH4
5	Ground	6	P_AI_CH1
7	P_AI_CH2	8	P_AI_CH3
9	P_AI_CH4	10	N/C
1	Ground	2	Composite_OUT
3	Ground	4	Y_OUT
5	Ground	6	C_OUT
7	Ground	8	AudioL_OUT
9	AudioR_OUT	10	N/C

Found New Hardware Wizard



This wizard helps you install software for:

Multimedia Controller



If your hardware came with an installation CD or floppy disk, insert it now.

What do you want the wizard to do?

- Install the software automatically (Recommended)
- Install from a list or specific location (Advanced)

Click Next to continue.

< Back

Next >

Cancel

2.Press General Setting

Live Display Mode select

5. Memory to Overlay , 60 field/sec or

6. Memory to Overlay , 30 frame/sec

VGA Card select Intel Onboard VGA

General Setting Dialog

Record File Save Directory
C:\

Video Type
 NTSC
 PAL

Live Display Mode
 1. Overlay surface, 60 field/sec, No flip
 2. 1 Overlay surface, 30 frame/sec, No flip
 3. N Overlay surface, 60 field/sec, Flip
 4. N Overlay surface, 30 frame/sec, Flip
 5. Memory to Overlay, 60 field/sec
 6. Memory to Overlay, 30 frame/sec
 7. N Overlay surface, 30 field/sec, Flip

Video Card
 Intel Onboard VGA
 NVidia GeForce
 ATI Radeon
 Other

Deinterlacing
 BOB
 Weave (No deinterlacing)

Camera to Decoder Channel (Matrix)

1	Cam 01	9	Cam 09
2	Cam 02	10	Cam 10
3	Cam 03	11	Cam 11
4	Cam 04	12	Cam 12
5	Cam 05	13	Cam 13
6	Cam 06	14	Cam 14
7	Cam 07	15	Cam 15
8	Cam 08	16	Cam 16

Number of surfaces (for mode 3, 4)
3 Default

Set Mosaic and Video Motion Property ...

MPEG4
Recording method
 Multi channel file
 Single channel file

Encoder OSD
 Channel
 Date
 Time
 Shadow effect on text

Color
Y 255
Cb 128
Cr 128

Offset
H 0
V 0

G.723
Recording method
 Multi channel file
 Single channel file

OK
Cancel

3.Main Function

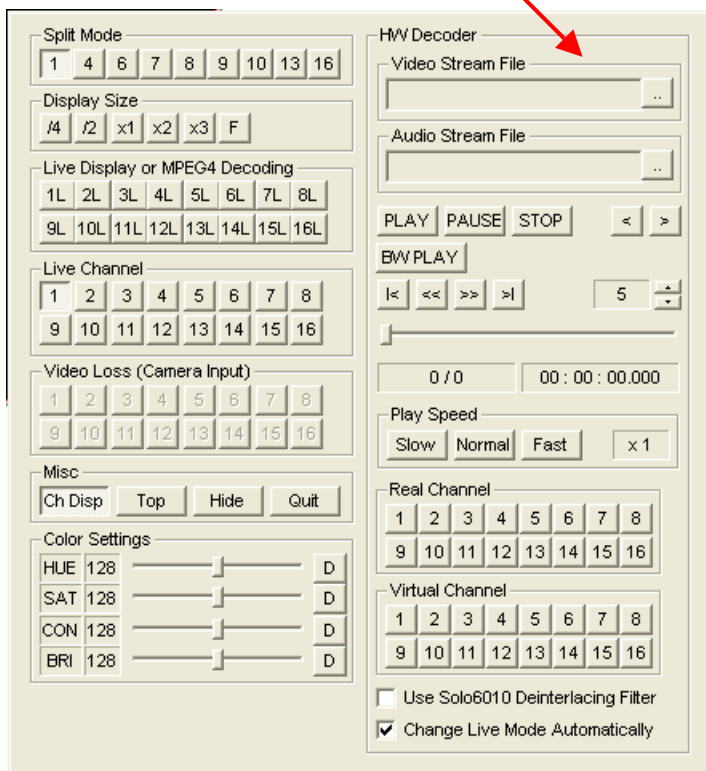
1. Live & HW player

The live display and hardware player can be tested using this function

Load file

video → xxx.MR4

audio → xxx.RG7

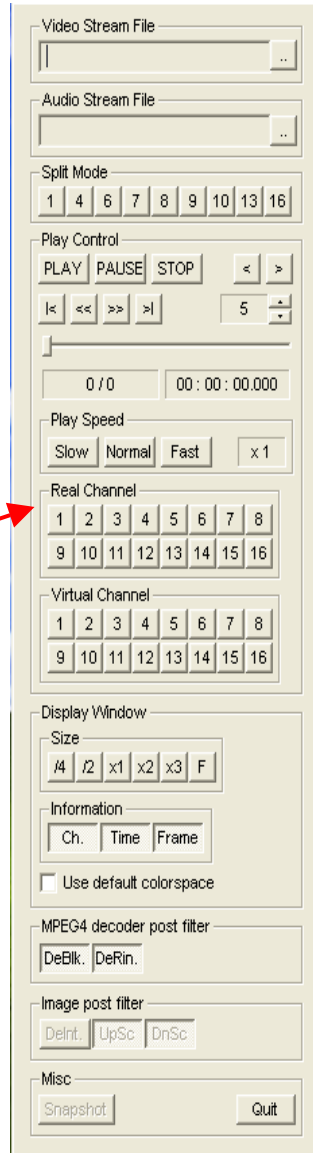


2. SW player

The recorded MPEG4 file can be played back using this function

Select audio channel

The audio played back only one channel



Record Setting Dialog

Video

Real Channel Virtual Channel

MPEG4

	Quality	GOP	Img. Size	FPS	I.B.P.	Bitrate	CBR Buffer
All		0					
1	3	15	704x240 Field	60		VBR	5 sec
2	3	15	704x240 Field	60		VBR	5 sec
3	3	15	704x240 Field	60		VBR	5 sec
4	3	15	704x240 Field	60		VBR	5 sec
5	3	15	704x240 Field	60		VBR	5 sec
6	3	15	704x240 Field	60		VBR	5 sec
7	3	15	704x240 Field	60		VBR	5 sec
8	3	15	704x240 Field	60		VBR	5 sec
9	3	15	704x240 Field	60		VBR	5 sec
10	3	15	704x240 Field	60		VBR	5 sec
11	3	15	704x240 Field	60		VBR	5 sec
12	3	15	704x240 Field	60		VBR	5 sec
13	3	15	704x240 Field	60		VBR	5 sec
14	3	15	704x240 Field	60		VBR	5 sec
15	3	15	704x240 Field	60		VBR	5 sec
16	3	15	704x240 Field	60		VBR	5 sec

JPEG

Audio (G.723)

Sampling Rate
8KHz

Channel

1, 2
3, 4
5, 6
7, 8
9, 10
11, 12
13, 14
15, 16

OK
Cancel

Any advice or comments about our products and service, or anything we can help you with please don't hesitate to contact with us. We will do our best to support your products, projects and business.



Address: Global American, Inc.
17 Hampshire Drive
Hudson, NH 03051

Telephone: Toll Free U.S. Only (800) 833-8999
(603) 886-3900

FAX: (603) 886-4545

Website: <http://www.globalamericaninc.com>

Support: Technical Support at Global American
