



3907890

User's Manual

Edition 1.0

2010/04/19



Copyright

Copyright 2011 all rights reserved. This document is copyrighted and all rights are reserved. The information in this document is subject to change without prior notice to make improvements to the products.

This document contains proprietary information and protected by copyright. No part of this document may be reproduced, copied, or translated in any form or any means without prior written permission of the manufacturer.

All trademarks and/or registered trademarks contains in this document are property of their respective owners.

Disclaimer

The company shall not be liable for any incidental or consequential damages resulting from the performance or use of this product.

The company does not issue a warranty of any kind, express or implied, including without limitation implied warranties of merchantability or fitness for a particular purpose.

The company has the right to revise the manual or include changes in the specifications of the product described within it at any time without notice and without obligation to notify any person of such revision or changes.

Trademark

All trademarks are the property of their respective holders.

Packing List:

Hardware:

3907890 Mini PCI Express Capture Card x1

Cable kit:

Cable:



1 x 10-pin DF14 to D-sub 9 Cable



1 x 4-ch BNC Video input &
4-ch RCA Audio input Cable

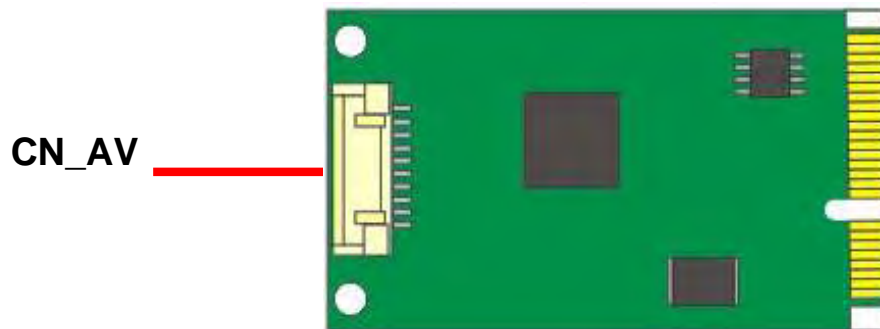
CD Content:

Drivers & User's Manual

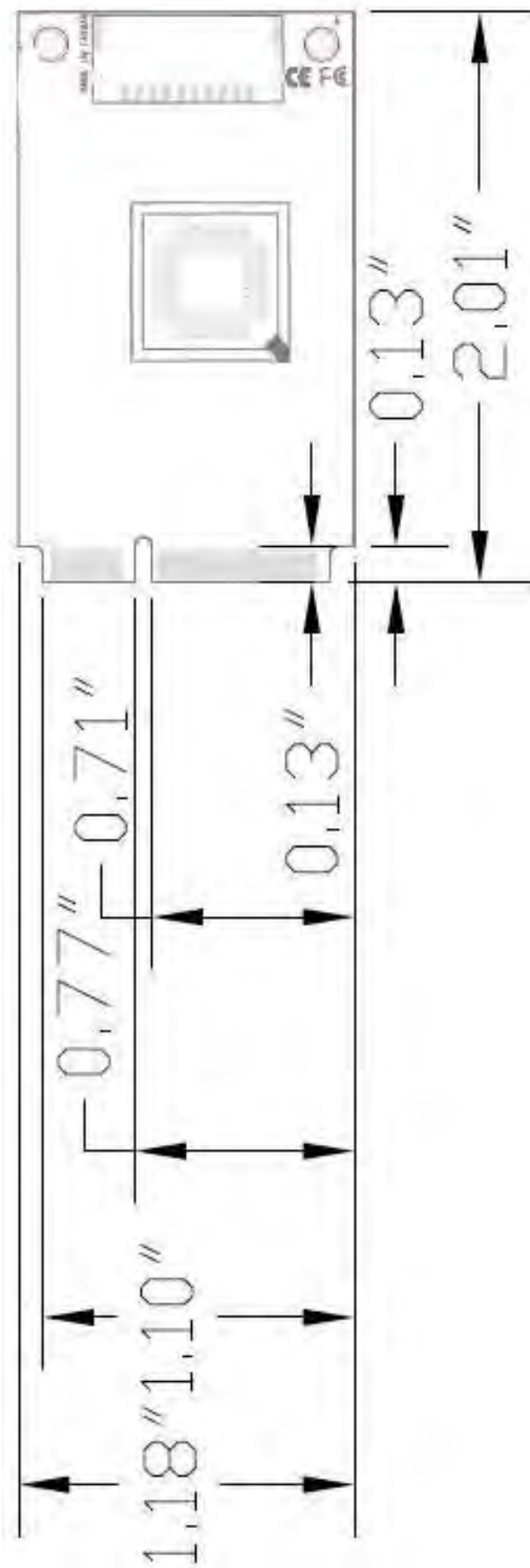
1.0 <Product Specification>

General Specification	
Form Factor	PCI Express mini card
Controller	One TW6864 chip
Accessories	1 x 10-pin DF14 to 1 x D-sub 9 Cable 1 x 4-ch BNC Video input & 4-ch RCA Audio input Cable
Display rate	4 channel video inputs share with 120 fps
Output Type	NTSC(M/N/4.43) PAL(B/D/G/H/I/K/L/M/N/60) SECAM standards
Dimensions (L x W)	51mm x 30mm

1.1 <Component Placement>



1.2 <Mechanical Drawing>



1.3 <Connector Reference>

Connector: CN_AV

Type: DF14 10-pin pitch=1.25mm



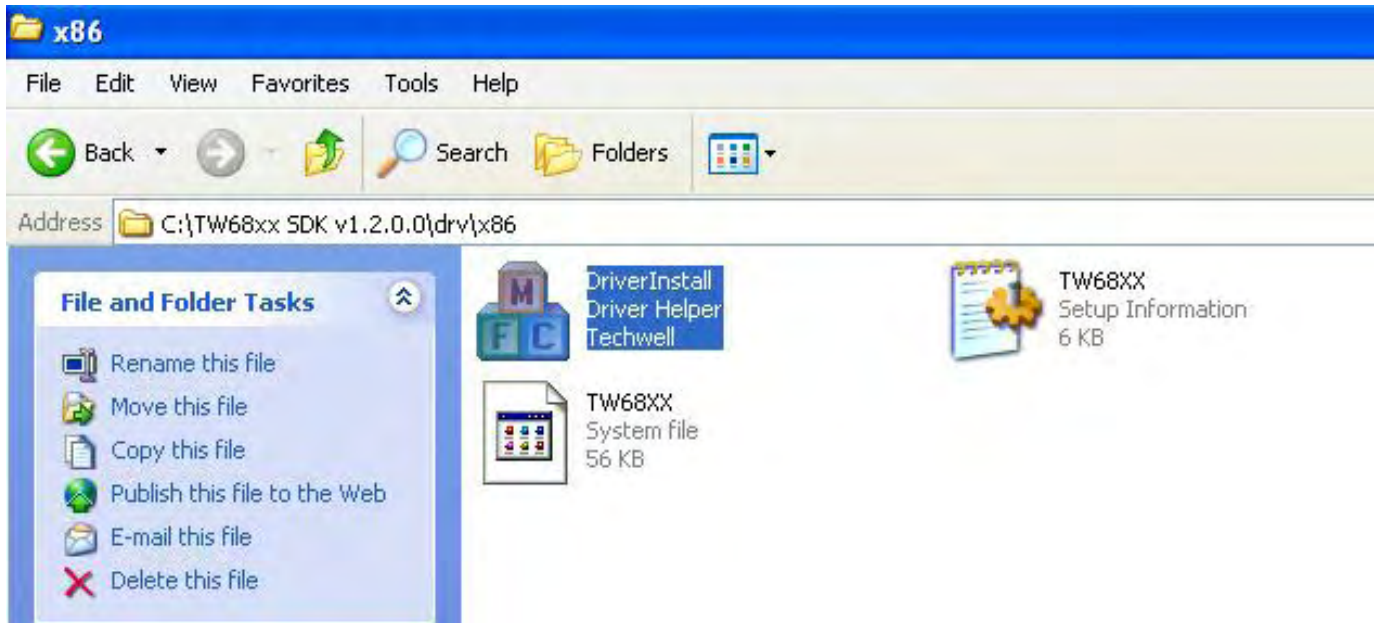
Pin	Description	Pin	Description
1	Video1	2	Video2
3	Video3	4	Video4
5	Ground	6	Audio1
7	Audio2	8	Audio3
9	Audio4	10	Ground

1.4 <Driver Setting>

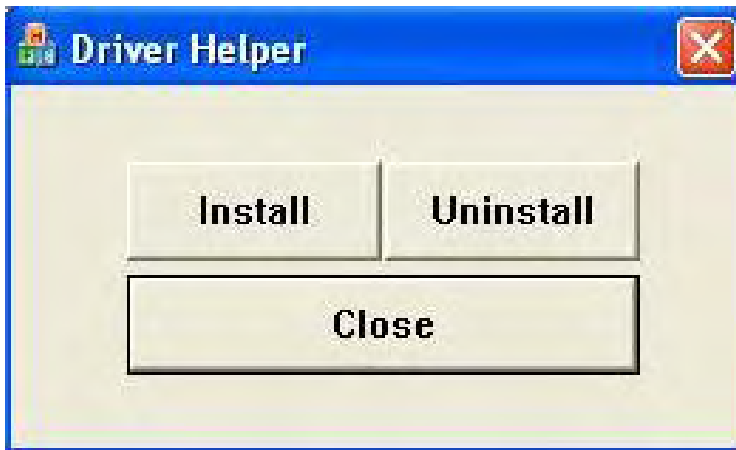
1. Copy the CD Driver folder to disk, Ex: C:\ , D:\ ...

2. Please select file location

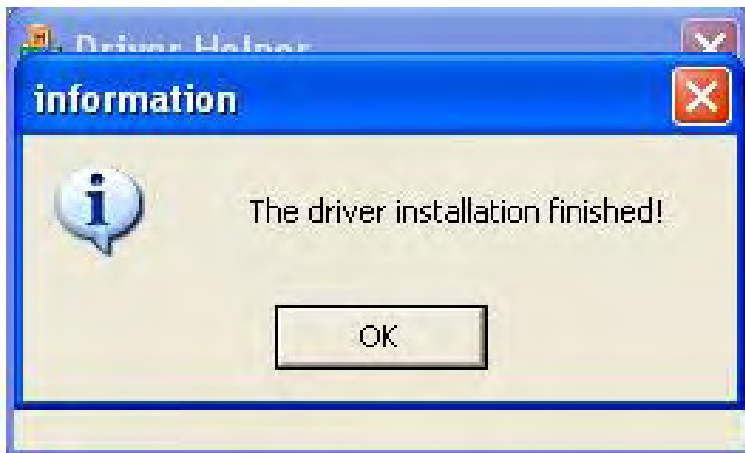
C:\TW68xx SDK\drv\x86\Driverinstall



3. Please choose **Install**



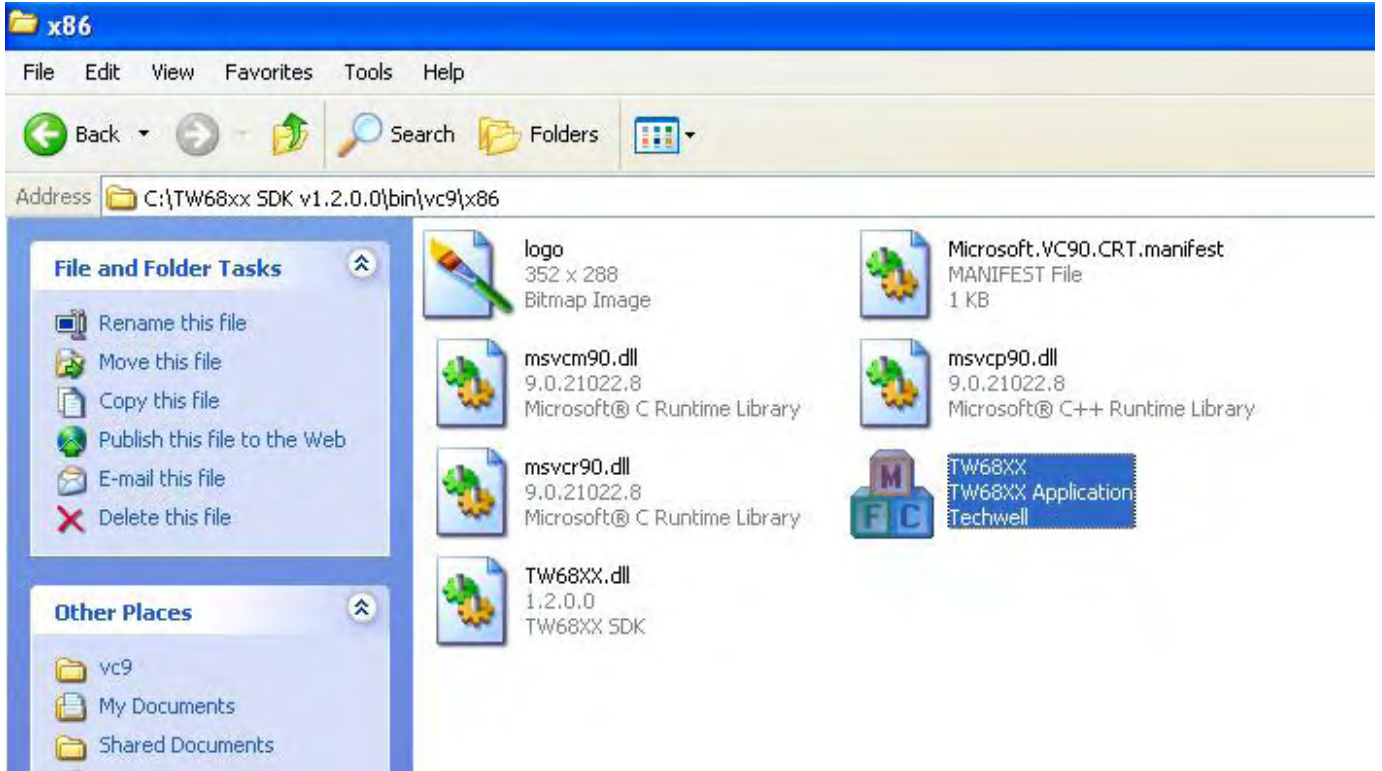
4. Please click “**OK**” to complete the installation.



1.5 <Sample Program>

1. Please select file location

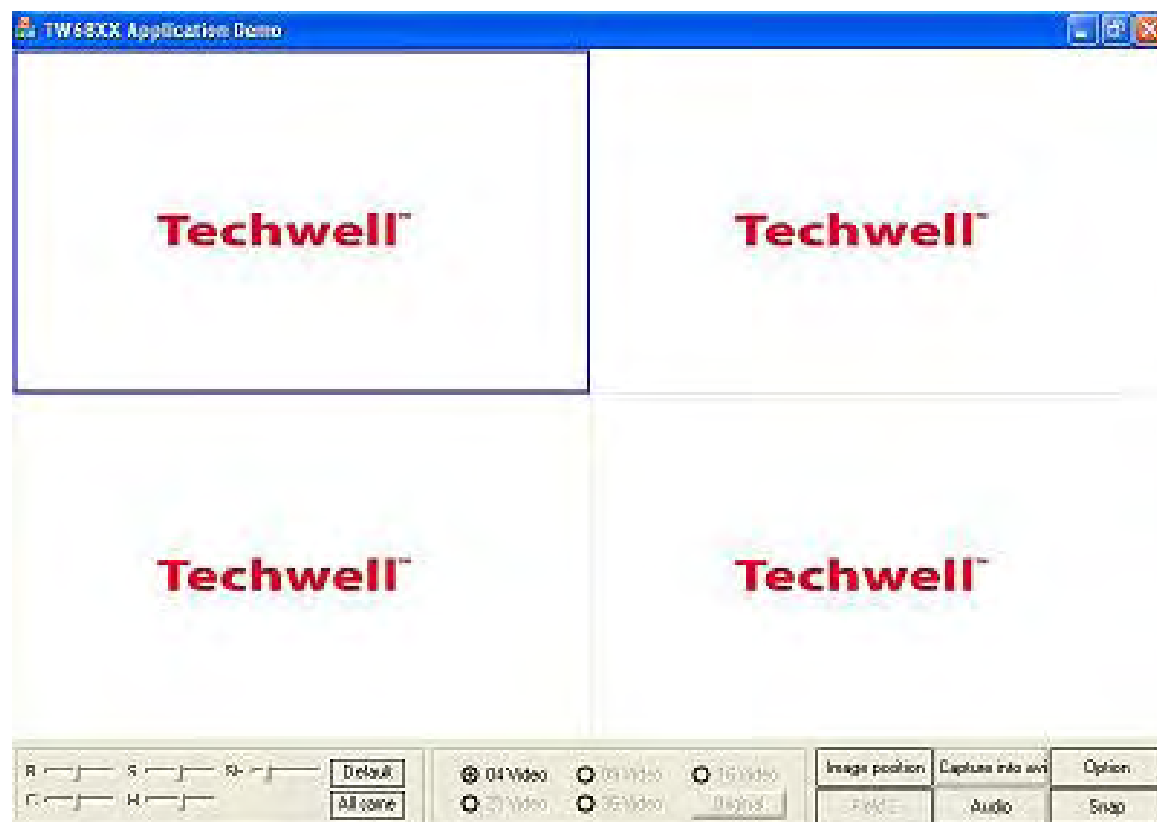
C:\TW68xx SDK\bin\vc9\x86\Tw68xx



2. Please refer to the usage instructions.

C:\TW68xx SDK\doc

\TW68XX SDK Demo Program Instructions.doc



Any advice or comments about our products and service, or anything we can help you with please don't hesitate to contact with us. We will do our best to support you for your products, projects and business.

Global American Inc.

Address: 17 Hampshire Drive
Hudson, NH 03051

TEL: Toll Free (U.S. Only) 800-833-8999
(603)886-3900

FAX: (603)886-4545

Website: <http://www.globalamericaninc.com>

E-Mail: salesinfo@globalamericaninc.com

